

## Ezrin Polyclonal Antibody

Catalog No: #40910



Package Size: #40910-1 50ul #40910-2 100ul

Orders: [order@signalwayantibody.com](mailto:order@signalwayantibody.com)Support: [tech@signalwayantibody.com](mailto:tech@signalwayantibody.com)

## Description

Product Name	Ezrin Polyclonal Antibody
Host Species	Rabbit
Clonality	Polyclonal
Purification	The antibody was affinity-purified from rabbit antiserum by affinity-chromatography using epitope-specific immunogen.
Applications	WB ELISA
Species Reactivity	Hu Ms Rt
Specificity	Ezrin Polyclonal Antibody detects endogenous levels of Ezrin protein.
Immunogen Type	peptide
Immunogen Description	Synthesized peptide derived from human Ezrin around the non-phosphorylation site of T566.
Target Name	Ezrin
Other Names	EZR; VIL2; Ezrin; Cytovillin; Villin-2; p81
Accession No.	Swiss-Prot: P15311NCBI Gene ID: 7430
SDS-PAGE MW	119kd
Concentration	1mg/ml
Formulation	Liquid in PBS containing 50% glycerol, 0.5% BSA and 0.02% sodium azide.
Storage	Store at -20°C/1 year

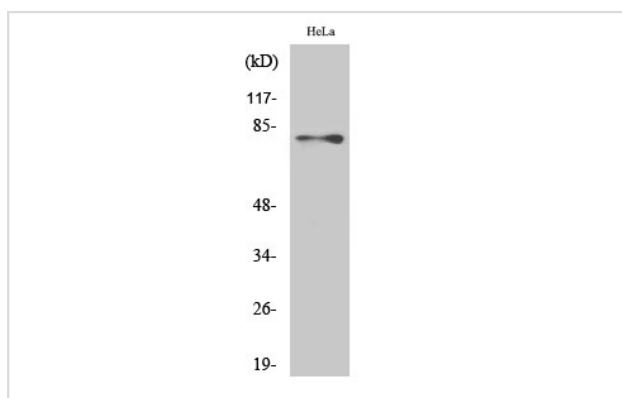
## Application Details

Western Blot: 1/500 - 1/2000.

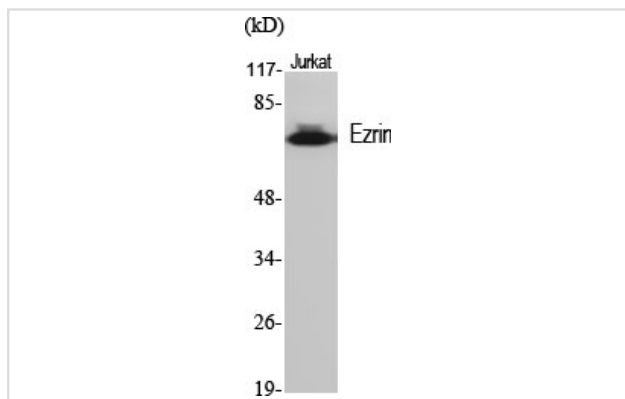
ELISA: 1/20000.

Not yet tested in other applications.

## Images



Western Blot analysis of HepG2 cells using Ezrin Polyclonal Antibody



Western Blot analysis of Jurkat cells using Ezrin Polyclonal Antibody

---

Note: This product is for in vitro research use only and is not intended for use in humans or animals.