

Endophilin B2 Polyclonal Antibody

Catalog No: #40882



Package Size: #40882-1 50ul #40882-2 100ul

Orders: order@signalwayantibody.comSupport: tech@signalwayantibody.com

Description

Product Name	Endophilin B2 Polyclonal Antibody
Host Species	Rabbit
Clonality	Polyclonal
Purification	The antibody was affinity-purified from rabbit antiserum by affinity-chromatography using epitope-specific immunogen.
Applications	WB IHC ELISA
Species Reactivity	Hu Ms Rt Mk
Specificity	Endophilin B2 Polyclonal Antibody detects endogenous levels of Endophilin B2 protein.
Immunogen Type	peptide
Immunogen Description	Synthesized peptide derived from the Internal region of human Endophilin B2.
Target Name	Endophilin B2
Other Names	SH3GLB2; KIAA1848; PP578; Endophilin-B2; SH3 domain-containing GRB2-like protein B2
Accession No.	Swiss-Prot: Q9NR46NCBI Gene ID: 56904
SDS-PAGE MW	34kd
Concentration	1mg/ml
Formulation	Liquid in PBS containing 50% glycerol, 0.5% BSA and 0.02% sodium azide.
Storage	Store at -20°C/1 year

Application Details

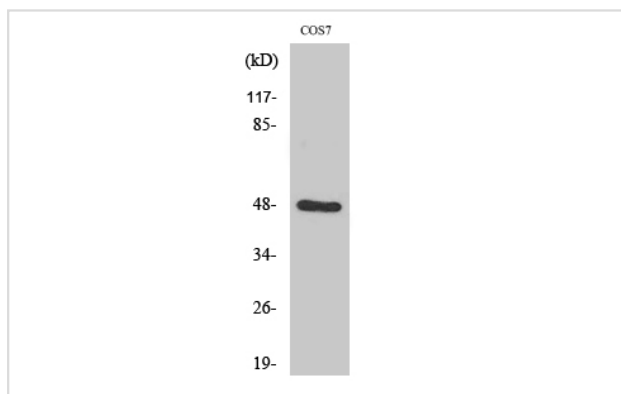
Western Blot: 1/500 - 1/2000.

Immunohistochemistry: 1/100 - 1/300.

ELISA: 1/40000.

Not yet tested in other applications.

Images



Western Blot analysis of COS7 cells using Endophilin B2 Polyclonal Antibody

Note: This product is for in vitro research use only and is not intended for use in humans or animals.