

## Elk-1 Polyclonal Antibody

Catalog No: #40876



Package Size: #40876-1 50ul #40876-2 100ul

Orders: [order@signalwayantibody.com](mailto:order@signalwayantibody.com)Support: [tech@signalwayantibody.com](mailto:tech@signalwayantibody.com)

## Description

Product Name	Elk-1 Polyclonal Antibody
Host Species	Rabbit
Clonality	Polyclonal
Purification	The antibody was affinity-purified from rabbit antiserum by affinity-chromatography using epitope-specific immunogen.
Applications	WB IHC IP ELISA
Species Reactivity	Hu Ms Rt
Specificity	Elk-1 Polyclonal Antibody detects endogenous levels of Elk-1 protein.
Immunogen Type	peptide
Immunogen Description	Synthesized peptide derived from human Elk-1 around the non-phosphorylation site of S389.
Target Name	Elk-1
Other Names	ELK1; ETS domain-containing protein Elk-1
Accession No.	Swiss-Prot: P19419NCBI Gene ID: 2002
SDS-PAGE MW	45kd
Concentration	1mg/ml
Formulation	Liquid in PBS containing 50% glycerol, 0.5% BSA and 0.02% sodium azide.
Storage	Store at -20°C/1 year

## Application Details

Western Blot: 1/500 - 1/2000.

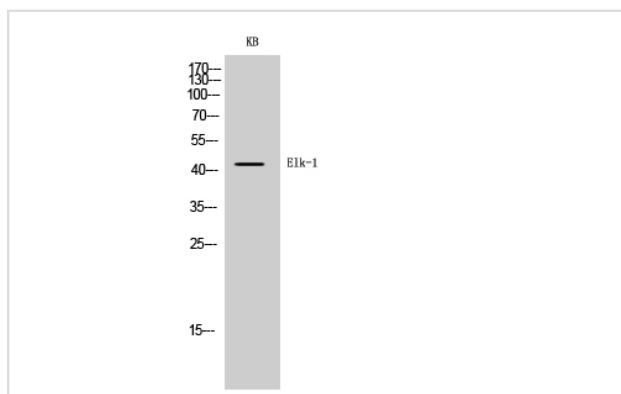
Immunohistochemistry: 1/100 - 1/300. Immunoprec

Immunoprecipitation: 2-5 ug/mg lysate.

ELISA: 1/20000.

Not yet tested in other applications.

## Images



Western Blot analysis of KB cells using Elk-1 Polyclonal Antibody

---

Note: This product is for in vitro research use only and is not intended for use in humans or animals.