

E-cadherin Polyclonal Antibody

Catalog No: #40860



Package Size: #40860-1 50ul #40860-2 100ul

Orders: order@signalwayantibody.comSupport: tech@signalwayantibody.com

Description

Product Name	E-cadherin Polyclonal Antibody
Host Species	Rabbit
Clonality	Polyclonal
Purification	The antibody was affinity-purified from rabbit antiserum by affinity-chromatography using epitope-specific immunogen.
Applications	WB IHC IF ELISA
Species Reactivity	Hu Ms Rt
Specificity	E-cadherin Polyclonal Antibody detects endogenous levels of E-cadherin protein.
Immunogen Type	peptide
Immunogen Description	Synthesized peptide derived from the C-terminal region of human E-cadherin.
Target Name	E-cadherin
Other Names	CDH1; CDHE; UVO; Cadherin-1; CAM 120/80; Epithelial cadherin; E-cadherin; Uvomorulin; CD antigen CD324; CDH2; CDHN; NCAD; Cadherin-2; CDw325; Neural cadherin; N-cadherin; CD antigen CD325; CDH3; CDHP; Cadherin-3; Placental cadherin; P-cadhe
Accession No.	Swiss-Prot: P12830/P19022/P22223/P55283NCBI Gene ID: 999/1000/1001/1002
SDS-PAGE MW	100kd
Concentration	1mg/ml
Formulation	Liquid in PBS containing 50% glycerol, 0.5% BSA and 0.02% sodium azide.
Storage	Store at -20°C/1 year

Application Details

Western Blot: 1/500 - 1/2000.

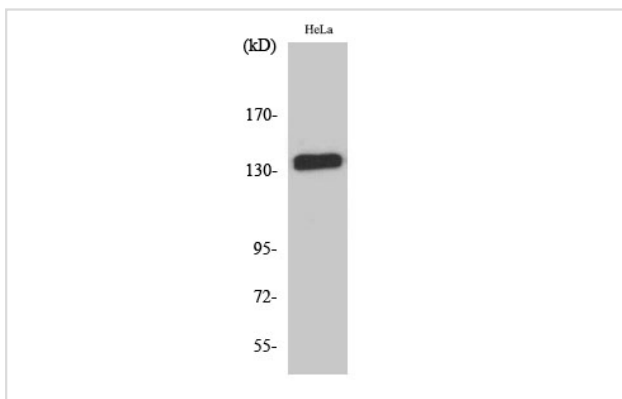
Immunohistochemistry: 1/100 - 1/300.

Immunofluorescence: 1/200 - 1/1000.

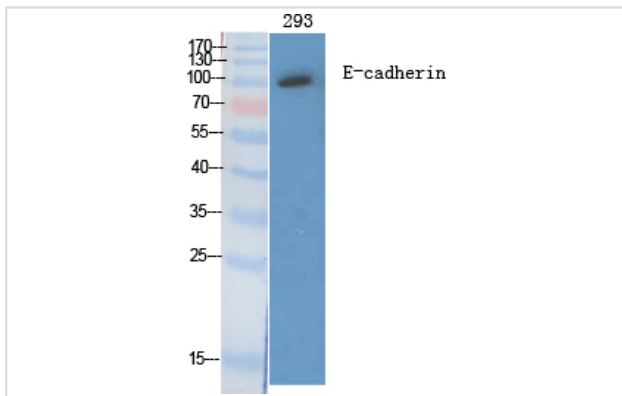
ELISA: 1/20000.

Not yet tested in other applications.

Images



Western Blot analysis of HeLa cells using E-cadherin Polyclonal Antibody



Western Blot analysis of 293 cells using E-cadherin Polyclonal Antibody

Note: This product is for in vitro research use only and is not intended for use in humans or animals.