

## E-cadherin Polyclonal Antibody

Catalog No: #40859



Package Size: #40859-1 50ul #40859-2 100ul

Orders: [order@signalwayantibody.com](mailto:order@signalwayantibody.com)Support: [tech@signalwayantibody.com](mailto:tech@signalwayantibody.com)

## Description

Product Name	E-cadherin Polyclonal Antibody
Host Species	Rabbit
Clonality	Polyclonal
Purification	The antibody was affinity-purified from rabbit antiserum by affinity-chromatography using epitope-specific immunogen.
Applications	WB IHC IF ELISA
Species Reactivity	Hu
Specificity	E-cadherin Polyclonal Antibody detects endogenous levels of E-cadherin protein.
Immunogen Type	peptide
Immunogen Description	Synthesized peptide derived from the N-terminal region of human E-cadherin.
Target Name	E-cadherin
Other Names	CDH1; CDHE; UVO; Cadherin-1; CAM 120/80; Epithelial cadherin; E-cadherin; Uvomorulin; CD antigen CD324
Accession No.	Swiss-Prot: P12830NCBI Gene ID: 999
SDS-PAGE MW	55kd
Concentration	1mg/ml
Formulation	Liquid in PBS containing 50% glycerol, 0.5% BSA and 0.02% sodium azide.
Storage	Store at -20°C/1 year

## Application Details

Western Blot: 1/500 - 1/2000.

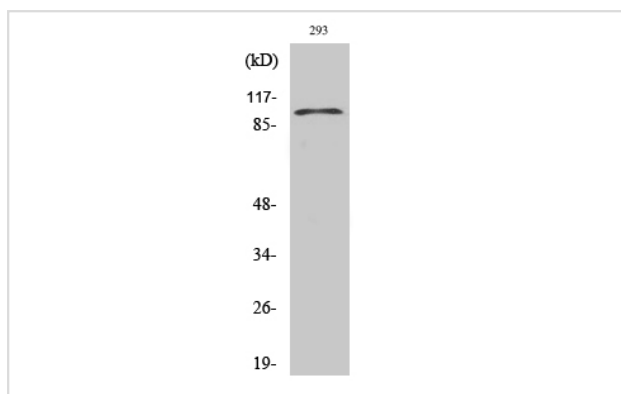
Immunohistochemistry: 1/100 - 1/300.

Immunofluorescence: 1/200 - 1/1000.

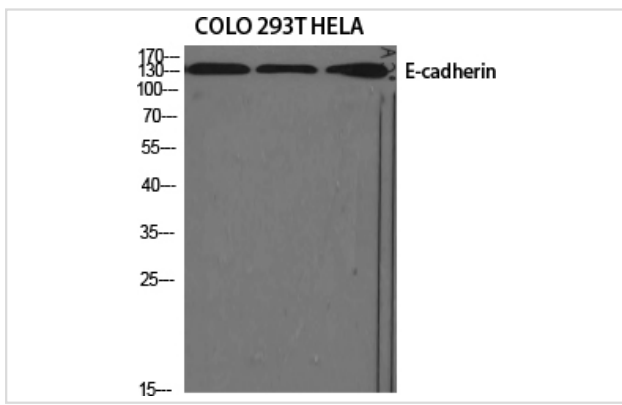
ELISA: 1/40000.

Not yet tested in other applications.

## Images



Western Blot analysis of 293 cells using E-cadherin Polyclonal Antibody



Western Blot analysis of COLO 293T HELA cells using E-cadherin Polyclonal Antibody

---

Note: This product is for in vitro research use only and is not intended for use in humans or animals.