

DAN Polyclonal Antibody

Catalog No: #40831



Package Size: #40831-1 50ul #40831-2 100ul

Orders: order@signalwayantibody.comSupport: tech@signalwayantibody.com

Description

Product Name	DAN Polyclonal Antibody
Host Species	Rabbit
Clonality	Polyclonal
Purification	The antibody was affinity-purified from rabbit antiserum by affinity-chromatography using epitope-specific immunogen.
Applications	WB IHC IF ELISA
Species Reactivity	Hu
Specificity	DAN Polyclonal Antibody detects endogenous levels of DAN protein.
Immunogen Type	peptide
Immunogen Description	Synthesized peptide derived from the C-terminal region of human DAN.
Target Name	DAN
Other Names	NBL1; DAN; DAND1; Neuroblastoma suppressor of tumorigenicity 1; DAN domain family member 1; Protein N03; Zinc finger protein DAN
Accession No.	Swiss-Prot: P41271NCBI Gene ID: 4681
SDS-PAGE MW	160kd
Concentration	1mg/ml
Formulation	Liquid in PBS containing 50% glycerol, 0.5% BSA and 0.02% sodium azide.
Storage	Store at -20°C/1 year

Application Details

Western Blot: 1/500 - 1/2000.

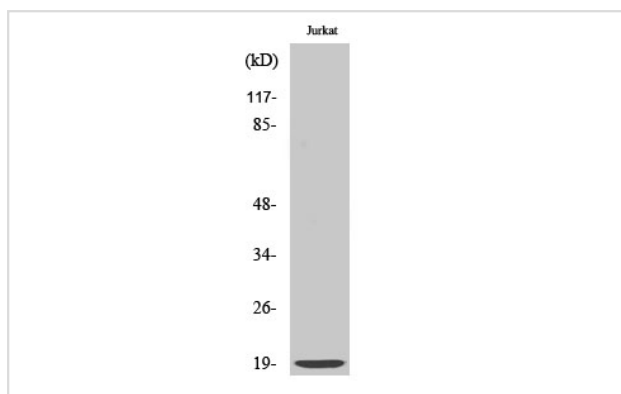
Immunohistochemistry: 1/100 - 1/300.

Immunofluorescence: 1/200 - 1/1000.

ELISA: 1/20000.

Not yet tested in other applications.

Images



Western Blot analysis of COLO205 cells using DAN Polyclonal Antibody

Note: This product is for in vitro research use only and is not intended for use in humans or animals.