

## Cyclin A Polyclonal Antibody

Catalog No: #40800



Package Size: #40800-1 50ul #40800-2 100ul

Orders: [order@signalwayantibody.com](mailto:order@signalwayantibody.com)Support: [tech@signalwayantibody.com](mailto:tech@signalwayantibody.com)

## Description

Product Name	Cyclin A Polyclonal Antibody
Host Species	Rabbit
Clonality	Polyclonal
Purification	The antibody was affinity-purified from rabbit antiserum by affinity-chromatography using epitope-specific immunogen.
Applications	WB IHC IF ELISA
Species Reactivity	Hu Ms Rt Mk
Specificity	Cyclin A Polyclonal Antibody detects endogenous levels of Cyclin A protein.
Immunogen Type	peptide
Immunogen Description	Synthesized peptide derived from the Internal region of human Cyclin A.
Target Name	Cyclin A
Other Names	CCNA1; Cyclin-A1; CCNA2; CCN1; CCNA; Cyclin-A2; Cyclin-A
Accession No.	Swiss-Prot: P78396/P20248NCBI Gene ID: 8900/890
SDS-PAGE MW	49kd
Concentration	1mg/ml
Formulation	Liquid in PBS containing 50% glycerol, 0.5% BSA and 0.02% sodium azide.
Storage	Store at -20°C/1 year

## Application Details

Western Blot: 1/500 - 1/2000.

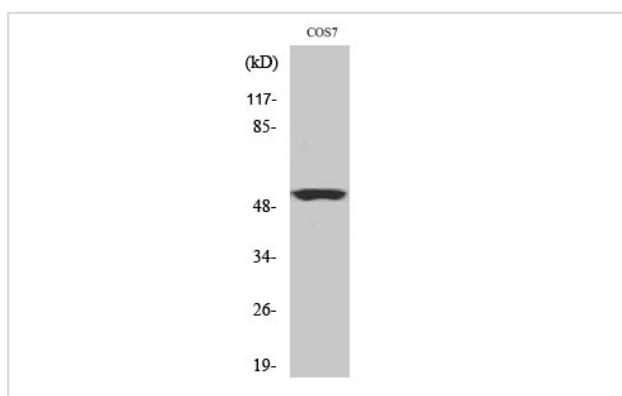
Immunohistochemistry: 1/100 - 1/300.

Immunofluorescence: 1/200 - 1/1000.

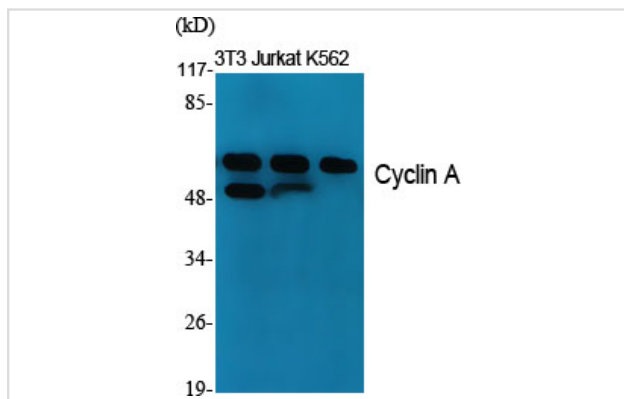
ELISA: 1/10000.

Not yet tested in other applications.

## Images



Western Blot analysis of COS7 cells using Cyclin A Polyclonal Antibody



Western Blot analysis of NIH-3T3 Jurkat K562 cells using Cyclin A Polyclonal Antibody

---

Note: This product is for in vitro research use only and is not intended for use in humans or animals.