

CSP Polyclonal Antibody

Catalog No: #40789



Package Size: #40789-1 50ul #40789-2 100ul

Orders: order@signalwayantibody.comSupport: tech@signalwayantibody.com

Description

Product Name	CSP Polyclonal Antibody
Host Species	Rabbit
Clonality	Polyclonal
Purification	The antibody was affinity-purified from rabbit antiserum by affinity-chromatography using epitope-specific immunogen.
Applications	WB ELISA
Species Reactivity	Hu Ms Rt
Specificity	CSP Polyclonal Antibody detects endogenous levels of CSP protein.
Immunogen Type	peptide
Immunogen Description	Synthesized peptide derived from the C-terminal region of human CSP.
Target Name	CSP
Other Names	DNAJC5; CSP; DnaJ homolog subfamily C member 5; Cysteine string protein; CSP
Accession No.	Swiss-Prot: Q9H3Z4NCBI Gene ID: 80331
SDS-PAGE MW	85kd
Concentration	1mg/ml
Formulation	Liquid in PBS containing 50% glycerol, 0.5% BSA and 0.02% sodium azide.
Storage	Store at -20°C/1 year

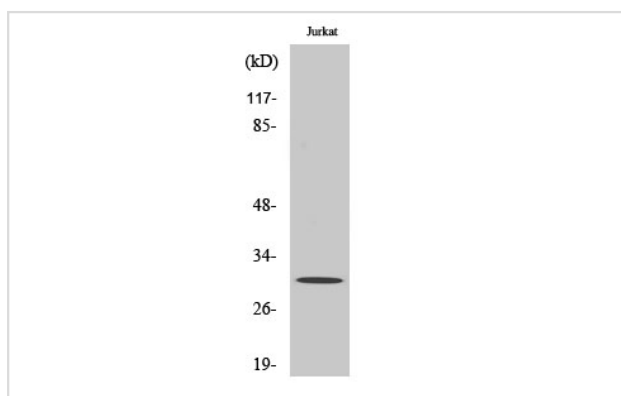
Application Details

Western Blot: 1/500 - 1/2000.

ELISA: 1/10000.

Not yet tested in other applications.

Images



Western Blot analysis of LOVO cells using CSP Polyclonal Antibody

Note: This product is for in vitro research use only and is not intended for use in humans or animals.