

## CHOP Polyclonal Antibody

Catalog No: #40744



Package Size: #40744-1 50ul #40744-2 100ul

Orders: [order@signalwayantibody.com](mailto:order@signalwayantibody.com)Support: [tech@signalwayantibody.com](mailto:tech@signalwayantibody.com)

## Description

Product Name	CHOP Polyclonal Antibody
Host Species	Rabbit
Clonality	Polyclonal
Purification	The antibody was affinity-purified from rabbit antiserum by affinity-chromatography using epitope-specific immunogen.
Applications	WB IHC IF ELISA
Species Reactivity	Hu Ms
Specificity	CHOP Polyclonal Antibody detects endogenous levels of CHOP protein.
Immunogen Type	peptide
Immunogen Description	Synthesized peptide derived from human CHOP around the non-phosphorylation site of S30.
Target Name	CHOP
Other Names	DDIT3; CHOP; CHOP10; GADD153; DNA damage-inducible transcript 3 protein; DDIT-3; C/EBP-homologous protein; CHOP; C/EBP-homologous protein 10; CHOP-10; Growth arrest and DNA damage-inducible protein GADD153
Accession No.	Swiss-Prot: P35638NCBI Gene ID: 1649
SDS-PAGE MW	23kd
Concentration	1mg/ml
Formulation	Liquid in PBS containing 50% glycerol, 0.5% BSA and 0.02% sodium azide.
Storage	Store at -20°C/1 year

## Application Details

Western Blot: 1/500 - 1/2000.

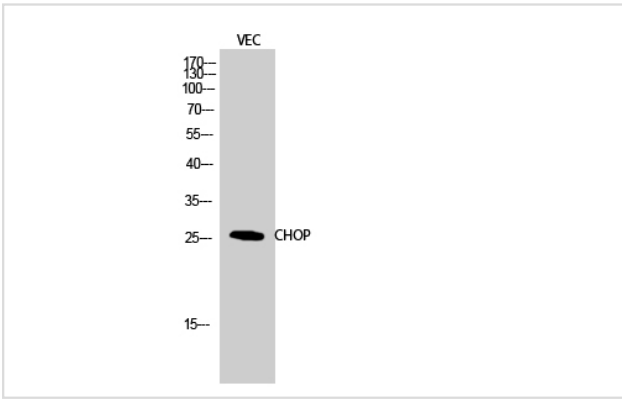
Immunohistochemistry: 1/100 - 1/300.

Immunofluorescence: 1/200 - 1/1000.

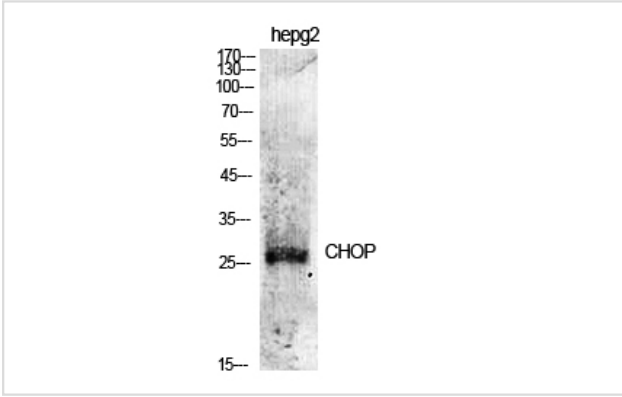
ELISA: 1/5000.

Not yet tested in other applications.

## Images



Western Blot analysis of VEC cells using CHOP Polyclonal Antibody



Western Blot analysis of HepG2 cells using CHOP Polyclonal Antibody

---

Note: This product is for in vitro research use only and is not intended for use in humans or animals.