

## Cdc23 Polyclonal Antibody

Catalog No: #40713

Package Size: #40713-1 50ul #40713-2 100ul

Orders: [order@signalwayantibody.com](mailto:order@signalwayantibody.com)Support: [tech@signalwayantibody.com](mailto:tech@signalwayantibody.com)

## Description

Product Name	Cdc23 Polyclonal Antibody
Host Species	Rabbit
Clonality	Polyclonal
Purification	The antibody was affinity-purified from rabbit antiserum by affinity-chromatography using epitope-specific immunogen.
Applications	WB ELISA
Species Reactivity	Hu Ms Mk
Specificity	Cdc23 Polyclonal Antibody detects endogenous levels of Cdc23 protein.
Immunogen Type	peptide
Immunogen Description	Synthesized peptide derived from the Internal region of human Cdc23.
Target Name	Cdc23
Other Names	CDC23; ANAPC8; Cell division cycle protein 23 homolog; Anaphase-promoting complex subunit 8; APC8; Cyclosome subunit 8
Accession No.	Swiss-Prot: Q9UJX2NCBI Gene ID: 8697
SDS-PAGE MW	34kd
Concentration	1mg/ml
Formulation	Liquid in PBS containing 50% glycerol, 0.5% BSA and 0.02% sodium azide.
Storage	Store at -20°C/1 year

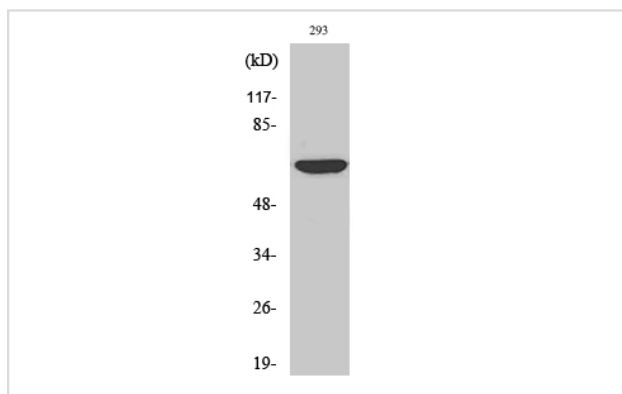
## Application Details

Western Blot: 1/500 - 1/2000.

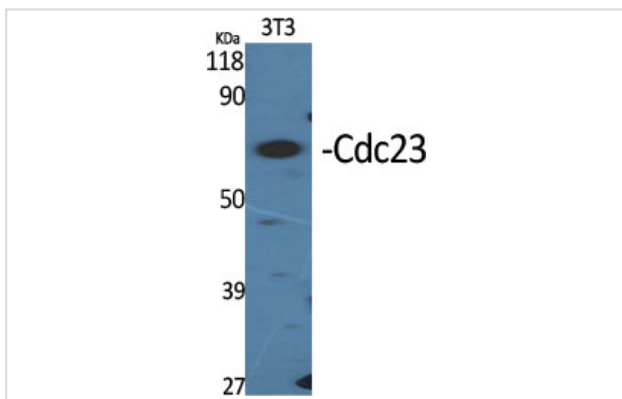
ELISA: 1/20000.

Not yet tested in other applications.

## Images



Western Blot analysis of COS7 cells using Cdc23 Polyclonal Antibody



Western Blot analysis of NIH-3T3 cells using Cdc23 Polyclonal Antibody

Note: This product is for in vitro research use only and is not intended for use in humans or animals.