

CBP Polyclonal Antibody

Catalog No: #40686



Package Size: #40686-1 50ul #40686-2 100ul

Orders: order@signalwayantibody.comSupport: tech@signalwayantibody.com

Description

Product Name	CBP Polyclonal Antibody
Host Species	Rabbit
Clonality	Polyclonal
Purification	The antibody was affinity-purified from rabbit antiserum by affinity-chromatography using epitope-specific immunogen.
Applications	WB IHC IF ELISA
Species Reactivity	Hu Ms Rt
Specificity	CBP Polyclonal Antibody detects endogenous levels of CBP protein.
Immunogen Type	peptide
Immunogen Description	Synthesized peptide derived from human CBP around the non-acetylation site of K1535.
Target Name	CBP
Other Names	CREBBP; CBP; CREB-binding protein
Accession No.	Swiss-Prot: Q92793NCBI Gene ID: 1387
SDS-PAGE MW	70kd
Concentration	1mg/ml
Formulation	Liquid in PBS containing 50% glycerol, 0.5% BSA and 0.02% sodium azide.
Storage	Store at -20°C/1 year

Application Details

Western Blot: 1/500 - 1/2000.

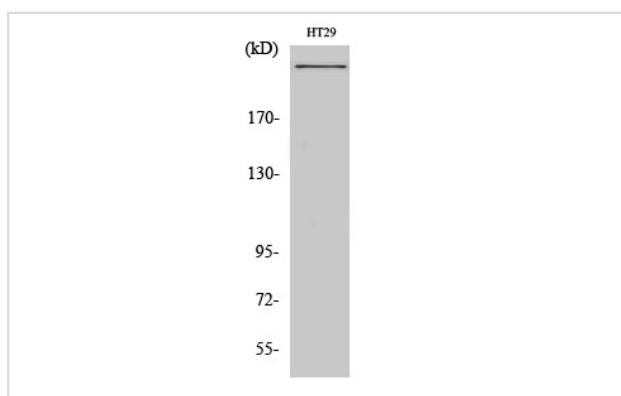
Immunohistochemistry: 1/100 - 1/300.

Immunofluorescence: 1/200 - 1/1000.

ELISA: 1/20000.

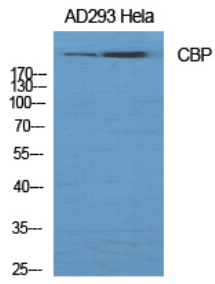
Not yet tested in other applications.

Images



Western Blot analysis of HT29 cells using CBP Polyclonal Antibody

Western Blot analysis of AD293 HELA cells using CBP Polyclonal Antibody



Note: This product is for in vitro research use only and is not intended for use in humans or animals.