

## CBG Polyclonal Antibody

Catalog No: #40685



Package Size: #40685-1 50ul #40685-2 100ul

Orders: [order@signalwayantibody.com](mailto:order@signalwayantibody.com)Support: [tech@signalwayantibody.com](mailto:tech@signalwayantibody.com)

## Description

|                       |   |
|-----------------------|---|
| Product Name          | CBG Polyclonal Antibody   |
| Host Species          | Rabbit  |
| Clonality             | Polyclonal  |
| Purification          | The antibody was affinity-purified from rabbit antiserum by affinity-chromatography using epitope-specific immunogen. |
| Applications          | WB ELISA  |
| Species Reactivity    | Hu  |
| Specificity           | CBG Polyclonal Antibody detects endogenous levels of CBG protein.   |
| Immunogen Type        | peptide   |
| Immunogen Description | Synthesized peptide derived from the Internal region of human CBG.  |
| Target Name           | CBG   |
| Other Names           | GBA3; CBG; CBGL1; Cytosolic beta-glucosidase; Cytosolic beta-glucosidase-like protein 1                               |
| Accession No.         | Swiss-Prot: Q9H227NCBI Gene ID: 57733   |
| SDS-PAGE MW           | 60kd  |
| Concentration         | 1mg/ml  |
| Formulation           | Liquid in PBS containing 50% glycerol, 0.5% BSA and 0.02% sodium azide.   |
| Storage               | Store at -20°C/1 year   |

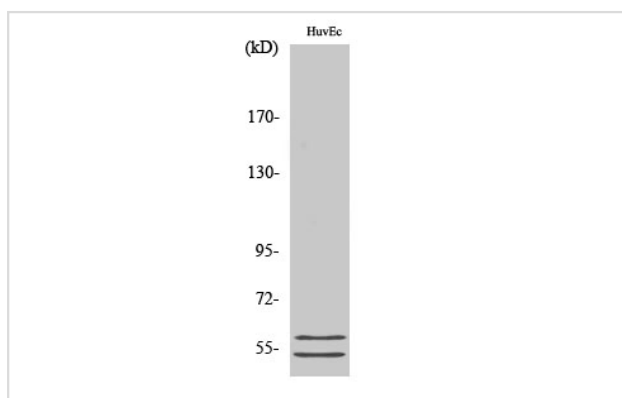
## Application Details

Western Blot: 1/500 - 1/2000.

ELISA: 1/20000.

Not yet tested in other applications.

## Images



Western Blot analysis of HuvEc cells using CBG Polyclonal Antibody

---

Note: This product is for in vitro research use only and is not intended for use in humans or animals.