

Catenin- $\beta$  Polyclonal Antibody

Catalog No: #40681



Package Size: #40681-1 50ul #40681-2 100ul

Orders: [order@signalwayantibody.com](mailto:order@signalwayantibody.com)Support: [tech@signalwayantibody.com](mailto:tech@signalwayantibody.com)

## Description

Product Name	Catenin- $\beta$ Polyclonal Antibody
Host Species	Rabbit
Clonality	Polyclonal
Purification	The antibody was affinity-purified from rabbit antiserum by affinity-chromatography using epitope-specific immunogen.
Applications	WB IHC IF ELISA
Species Reactivity	Hu Ms Rt Mk
Specificity	Catenin- $\beta$ Polyclonal Antibody detects endogenous levels of Catenin- $\beta$ protein.
Immunogen Type	peptide
Immunogen Description	Synthesized peptide derived from human Catenin- $\beta$ around the non-phosphorylation site of S33.
Target Name	Catenin- $\beta$
Other Names	CTNNB1; CTNNB; OK/SW-cl.35; Catenin beta-1; Beta-catenin
Accession No.	Swiss-Prot: P35222NCBI Gene ID: 1499
SDS-PAGE MW	54-58kd
Concentration	1mg/ml
Formulation	Liquid in PBS containing 50% glycerol, 0.5% BSA and 0.02% sodium azide.
Storage	Store at -20°C/1 year

## Application Details

Western Blot: 1/500 - 1/2000.

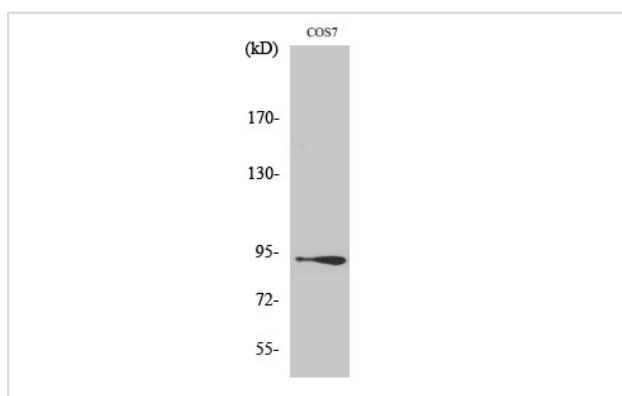
Immunohistochemistry: 1/100 - 1/300.

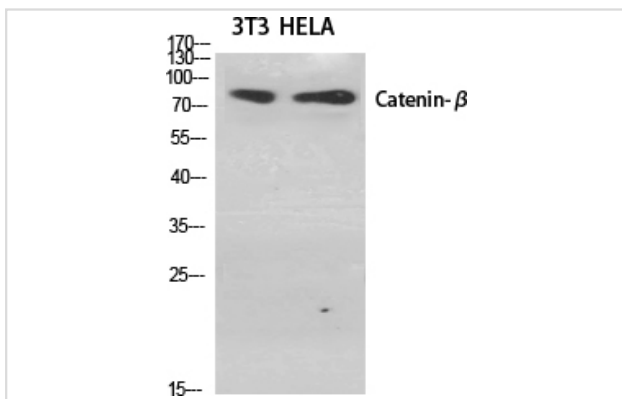
Immunofluorescence: 1/200 - 1/1000.

ELISA: 1/20000.

Not yet tested in other applications.

## Images

Western Blot analysis of COS7 cells using Catenin- $\beta$  Polyclonal Antibody



Western Blot analysis of NIH-3T3 HELA cells using Catenin- $\beta$  Polyclonal Antibody

---

Note: This product is for in vitro research use only and is not intended for use in humans or animals.