

Bak Polyclonal Antibody

Catalog No: #40633



Package Size: #40633-1 50ul #40633-2 100ul

Orders: order@signalwayantibody.comSupport: tech@signalwayantibody.com

Description

Product Name	Bak Polyclonal Antibody
Host Species	Rabbit
Clonality	Polyclonal
Purification	The antibody was affinity-purified from rabbit antiserum by affinity-chromatography using epitope-specific immunogen.
Applications	WB IHC IF ELISA
Species Reactivity	Hu Ms
Specificity	Bak Polyclonal Antibody detects endogenous levels of Bak protein.
Immunogen Type	peptide
Immunogen Description	Synthesized peptide derived from the N-terminal region of human Bak.
Target Name	Bak
Other Names	BAK1; BAK; BCL2L7; CDN1; Bcl-2 homologous antagonist/killer; Apoptosis regulator BAK; Bcl-2-like protein 7; Bcl2-L-7
Accession No.	Swiss-Prot: Q16611NCBI Gene ID: 578
SDS-PAGE MW	27kd
Concentration	1mg/ml
Formulation	Liquid in PBS containing 50% glycerol, 0.5% BSA and 0.02% sodium azide.
Storage	Store at -20°C/1 year

Application Details

Western Blot: 1/500 - 1/2000.

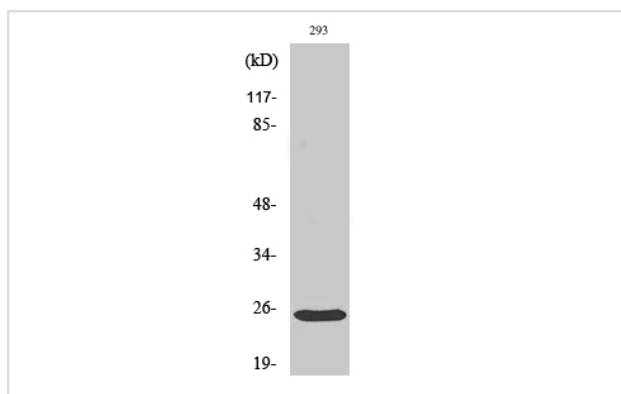
Immunohistochemistry: 1/100 - 1/300.

Immunofluorescence: 1/200 - 1/1000.

ELISA: 1/10000.

Not yet tested in other applications.

Images



Western Blot analysis of 293 cells using Bak Polyclonal Antibody



Western Blot analysis of 293T HELA MOUSE-BRAIN cells using Bak Polyclonal Antibody

Note: This product is for in vitro research use only and is not intended for use in humans or animals.