

## ASC Polyclonal Antibody

Catalog No: #40618



Package Size: #40618-1 50ul #40618-2 100ul

Orders: [order@signalwayantibody.com](mailto:order@signalwayantibody.com)Support: [tech@signalwayantibody.com](mailto:tech@signalwayantibody.com)

## Description

|                       |   |
|-----------------------|---|
| Product Name          | ASC Polyclonal Antibody   |
| Host Species          | Rabbit  |
| Clonality             | Polyclonal  |
| Purification          | The antibody was affinity-purified from rabbit antiserum by affinity-chromatography using epitope-specific immunogen.   |
| Applications          | WB IHC IF ELISA   |
| Species Reactivity    | Hu Ms Rt  |
| Specificity           | ASC Polyclonal Antibody detects endogenous levels of ASC protein.   |
| Immunogen Type        | peptide   |
| Immunogen Description | Synthesized peptide derived from the N-terminal region of human ASC.  |
| Target Name           | ASC   |
| Other Names           | PYCARD; ASC; CARD5; TMS1; Apoptosis-associated speck-like protein containing a CARD; hASC; Caspase recruitment domain-containing protein 5; PYD and CARD domain-containing protein; Target of methylation-induced silencing 1 |
| Accession No.         | Swiss-Prot: Q9ULZ3NCBI Gene ID: 29108   |
| SDS-PAGE MW           | 140kd   |
| Concentration         | 1mg/ml  |
| Formulation           | Liquid in PBS containing 50% glycerol, 0.5% BSA and 0.02% sodium azide.   |
| Storage               | Store at -20°C/1 year   |

## Application Details

Western Blot: 1/500 - 1/2000.

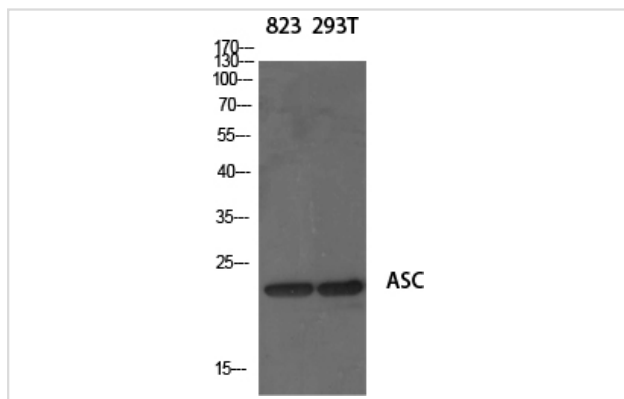
Immunohistochemistry: 1/100 - 1/300.

Immunofluorescence: 1/200 - 1/1000.

ELISA: 1/40000.

Not yet tested in other applications.

## Images



Western Blot analysis of 823 293T cells using ASC Polyclonal Antibody

---

Note: This product is for in vitro research use only and is not intended for use in humans or animals.