

## ARALAR Polyclonal Antibody

Catalog No: #40611

Package Size: #40611-1 50ul #40611-2 100ul

Orders: [order@signalwayantibody.com](mailto:order@signalwayantibody.com)Support: [tech@signalwayantibody.com](mailto:tech@signalwayantibody.com)

## Description

Product Name	ARALAR Polyclonal Antibody
Host Species	Rabbit
Clonality	Polyclonal
Purification	The antibody was affinity-purified from rabbit antiserum by affinity-chromatography using epitope-specific immunogen.
Applications	WB IHC ELISA
Species Reactivity	Hu
Specificity	ARALAR Polyclonal Antibody detects endogenous levels of ARALAR protein.
Immunogen Type	peptide
Immunogen Description	Synthesized peptide derived from the Internal region of human ARALAR.
Target Name	ARALAR
Other Names	SLC25A12; ARALAR1; Calcium-binding mitochondrial carrier protein Aralar1; Mitochondrial aspartate glutamate carrier 1; Solute carrier family 25 member 12
Accession No.	Swiss-Prot: O75746NCBI Gene ID: 8604
SDS-PAGE MW	48kd
Concentration	1mg/ml
Formulation	Liquid in PBS containing 50% glycerol, 0.5% BSA and 0.02% sodium azide.
Storage	Store at -20°C/1 year

## Application Details

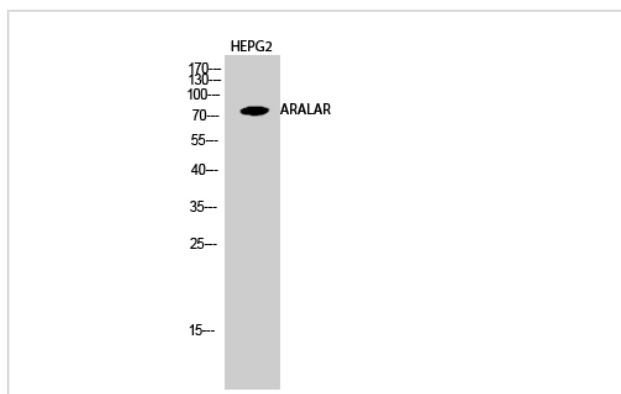
Western Blot: 1/500 - 1/2000.

Immunohistochemistry: 1/100 - 1/300.

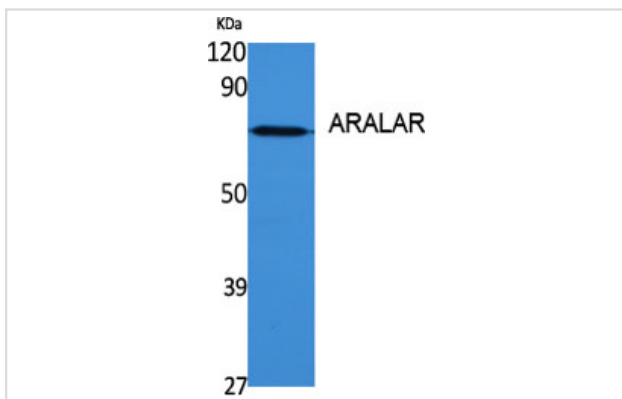
ELISA: 1/20000.

Not yet tested in other applications.

## Images



Western Blot analysis of HEPG2 cells using ARALAR Polyclonal Antibody



Western Blot analysis of various cells using ARALAR Polyclonal Antibody

---

Note: This product is for in vitro research use only and is not intended for use in humans or animals.