

## ApoE Polyclonal Antibody

Catalog No: #40604



Package Size: #40604-1 50ul #40604-2 100ul

Orders: [order@signalwayantibody.com](mailto:order@signalwayantibody.com)Support: [tech@signalwayantibody.com](mailto:tech@signalwayantibody.com)

## Description

Product Name	ApoE Polyclonal Antibody
Host Species	Rabbit
Clonality	Polyclonal
Purification	The antibody was affinity-purified from rabbit antiserum by affinity-chromatography using epitope-specific immunogen.
Applications	WB IHC ELISA
Species Reactivity	Hu Ms Rt
Specificity	ApoE Polyclonal Antibody detects endogenous levels of ApoE protein.
Immunogen Type	peptide
Immunogen Description	Synthesized peptide derived from the Internal region of human ApoE.
Target Name	ApoE
Other Names	APOE; Apolipoprotein E; Apo-E
Accession No.	Swiss-Prot: P02649NCBI Gene ID: 348
SDS-PAGE MW	35kd
Concentration	1mg/ml
Formulation	Liquid in PBS containing 50% glycerol, 0.5% BSA and 0.02% sodium azide.
Storage	Store at -20°C/1 year

## Application Details

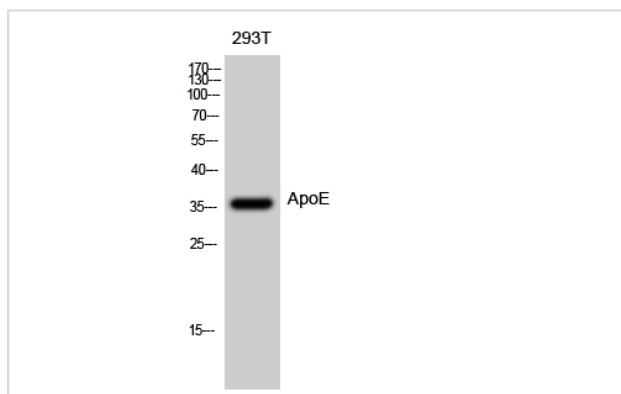
Western Blot: 1/500 - 1/2000.

Immunohistochemistry: 1/100 - 1/300.

ELISA: 1/10000.

Not yet tested in other applications.

## Images



Western Blot analysis of 293T cells using ApoE Polyclonal Antibody

---

Note: This product is for in vitro research use only and is not intended for use in humans or animals.