

# 14-3-3 ε Polyclonal Antibody

Catalog No: #40523

Package Size: #40523-1 50ul #40523-2 100ul

Orders: [order@signalwayantibody.com](mailto:order@signalwayantibody.com)Support: [tech@signalwayantibody.com](mailto:tech@signalwayantibody.com)

## Description

Product Name	14-3-3 ε Polyclonal Antibody
Host Species	Rabbit
Clonality	Polyclonal
Purification	The antibody was affinity-purified from rabbit antiserum by affinity-chromatography using epitope-specific immunogen.
Applications	WB IHC IF ELISA
Species Reactivity	Hu Ms Rt
Specificity	14-3-3 ε Polyclonal Antibody detects endogenous levels of 14-3-3 ε protein.
Immunogen Type	peptide
Immunogen Description	Synthesized peptide derived from the C-terminal region of human 14-3-3 ε.
Target Name	14-3-3 ε
Other Names	YWHAE; 14-3-3 protein epsilon; 14-3-3E
Accession No.	Swiss-Prot: P62258NCBI Gene ID: 7531
SDS-PAGE MW	41kd
Concentration	1mg/ml
Formulation	Liquid in PBS containing 50% glycerol, 0.5% BSA and 0.02% sodium azide.
Storage	Store at -20°C/1 year

## Application Details

Western Blot: 1/500 - 1/2000.

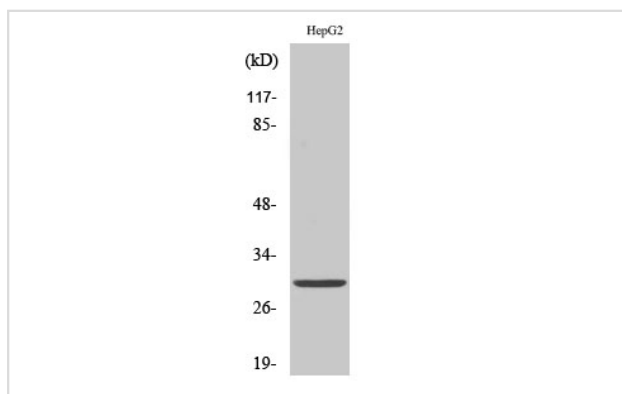
Immunohistochemistry: 1/100 - 1/300.

Immunofluorescence: 1/200 - 1/1000.

ELISA: 1/20000.

Not yet tested in other applications.

## Images



Western Blot analysis of Jurkat cells using 14-3-3 ε Polyclonal Antibody

---

Note: This product is for in vitro research use only and is not intended for use in humans or animals.