

Bovine Serum Albumin Monoclonal Antibody

Catalog No: #40492



Package Size: #40492-1 50ul #40492-2 100ul

Orders: order@signalwayantibody.comSupport: tech@signalwayantibody.com

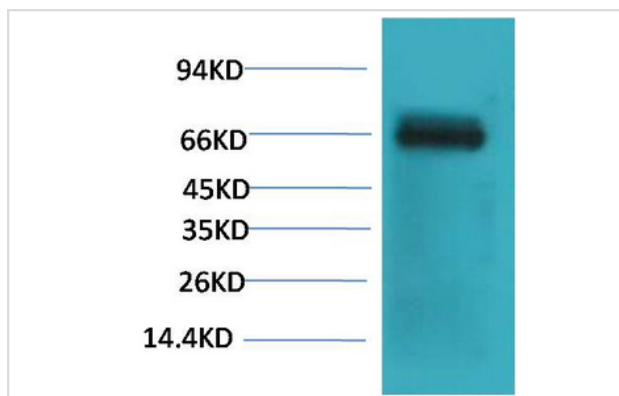
Description

Product Name	Bovine Serum Albumin Monoclonal Antibody
Host Species	Mouse
Clonality	Monoclonal
Purification	The antibody was affinity-purified from antiserum by affinity-chromatography
Applications	WB
Species Reactivity	Cow
Specificity	The antibody detects endogenous Bovine Serum Albumin protein.
Immunogen Type	Protein
Immunogen Description	Purified Protein
Target Name	Bovine Serum Albumin
SDS-PAGE MW	25,55kd
Concentration	1mg/ml
Formulation	PBS, pH 7.4, containing 0.02% sodium azide as Preservative and 50% Glycerol.
Storage	Store at -20°C/1 year

Application Details

Western blotting: 1:1000-2000

Images



Western blot analysis of Bovine Serum Albumin using Bovine Serum Albumin Monoclonal Antibody.

Note: This product is for in vitro research use only and is not intended for use in humans or animals.