

α-SMA Monoclonal Antibody

Catalog No: #40482



Package Size: #40482-1 50ul #40482-2 100ul

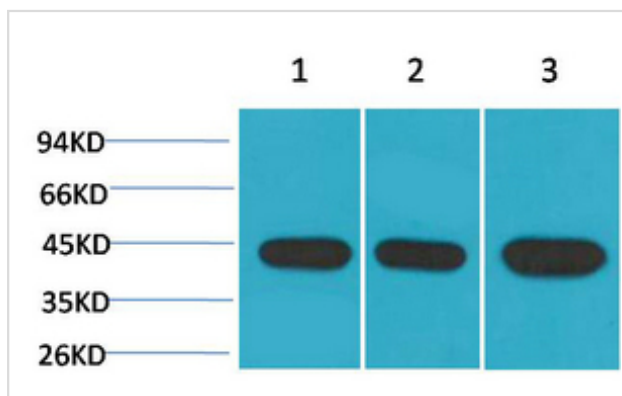
Orders: order@signalwayantibody.comSupport: tech@signalwayantibody.com**Description**

Product Name	α-SMA Monoclonal Antibody
Host Species	Mouse
Clonality	Monoclonal
Purification	The antibody was affinity-purified from antiserum by affinity-chromatography
Applications	WB IHC
Species Reactivity	Hu Ms Rt
Specificity	The antibody detects endogenous α -SMA protein.
Immunogen Type	peptide
Immunogen Description	Synthetic Peptide
Target Name	α-SMA
Accession No.	Swiss-Prot: P62736NCBI Gene ID: 59
SDS-PAGE MW	14kd
Concentration	1mg/ml
Formulation	PBS, pH 7.4, containing 0.02% sodium azide as Preservative and 50% Glycerol.
Storage	Store at -20°C/1 year

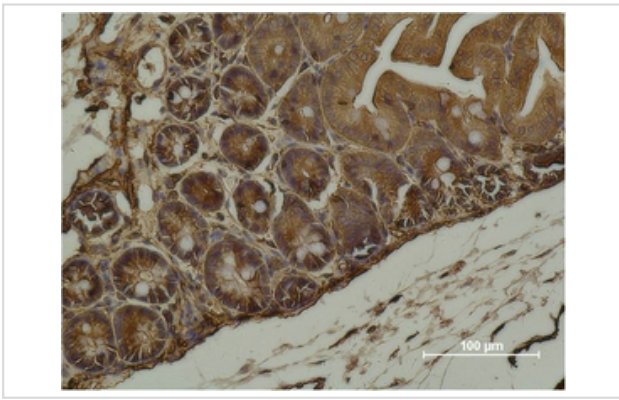
Application Details

Western blotting: 1:5000-50000

Immunohistochemistry: 1:1000-2000

Images

Western blot analysis of 1) Hela, 2) 3T3, 3) Rat Brain using α -SMA Monoclonal Antibody.



Immunohistochemical analysis of paraffin-embedded Mouse Cecal Tissue using α -SMA Monoclonal Antibody.

Note: This product is for in vitro research use only and is not intended for use in humans or animals.