

SRPRB Antibody

Catalog No: #40333



Orders: order@signalwayantibody.com

Support: tech@signalwayantibody.com

Description

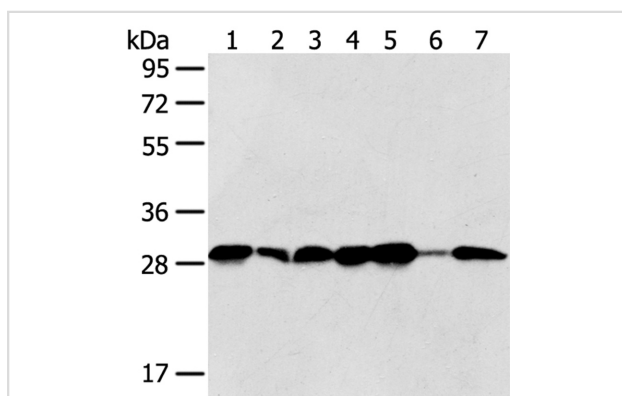
Product Name	SRPRB Antibody
Host Species	Rabbit
Clonality	Polyclonal
Purification	Antigen affinity purification.
Applications	WB IHC
Species Reactivity	Hu
Specificity	The antibody detects endogenous levels of total SRPRB protein.
Immunogen Type	Protein
Immunogen Description	Full length fusion protein
Target Name	SRPRB
Other Names	APMCF1
Accession No.	Swiss-Prot:Q9Y5M8Gene Accssion:BC065299
SDS-PAGE MW	30KD
Concentration	1.8mg/ml
Formulation	Rabbit IgG in pH7.4 PBS, 0.05% NaN ₃ , 40% Glycerol.
Storage	Store at -20°C

Application Details

Western blotting: 1:1000-1:5000

Immunohistochemistry:1:25-1:100

Images



Gel: 8%SDS-PAGE

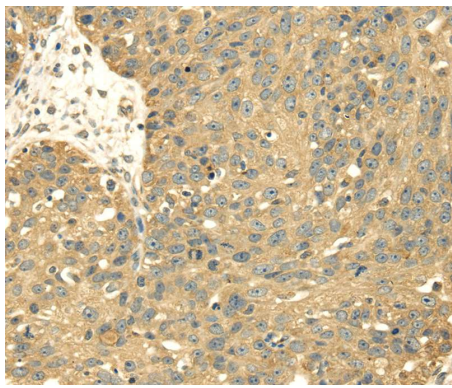
Lysates (from left to right): Jurkat, hela, 293T, 231 and hepg2 cell, human normal liver and bladder carcinoma tissue

Amount of lysate: 40ug per lane

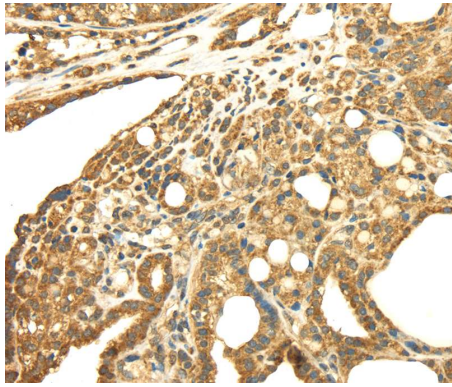
Primary antibody: 1/500 dilution

Secondary antibody dilution: 1/8000

Exposure time: 5 seconds



Immunohistochemical analysis of paraffin-embedded Human breast cancer tissue using #40333 at dilution 1/30.



Immunohistochemical analysis of paraffin-embedded Human thyroid cancer tissue using #40333 at dilution 1/30.

Background

The protein encoded by this gene has similarity to mouse protein which is a subunit of the signal recognition particle receptor (SR). This subunit is a transmembrane GTPase belonging to the GTPase superfamily. It anchors alpha subunit, a peripheral membrane GTPase, to the ER membrane. SR is required for the cotranslational targeting of both secretory and membrane proteins to the ER membrane.?

Note: This product is for in vitro research use only and is not intended for use in humans or animals.