

## UBTF Antibody

Catalog No: #40278

Orders: [order@signalwayantibody.com](mailto:order@signalwayantibody.com)Support: [tech@signalwayantibody.com](mailto:tech@signalwayantibody.com)

## Description

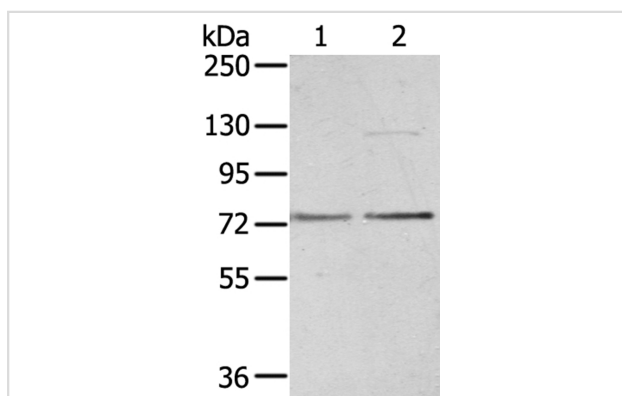
|                       |  |
|-----------------------|--|
| Product Name          | UBTF Antibody  |
| Host Species          | Rabbit   |
| Clonality             | Polyclonal   |
| Purification          | Antigen affinity purification.   |
| Applications          | WB IHC   |
| Species Reactivity    | Hu Ms Rt   |
| Specificity           | The antibody detects endogenous levels of total UBTF protein.                      |
| Immunogen Type        | Peptide  |
| Immunogen Description | Synthetic peptide of human upstream binding transcription factor, RNA polymerase I |
| Target Name           | UBTF   |
| Other Names           | UBF; UBF1; UBF2; UBF-1; NOR-90   |
| Accession No.         | Swiss-Prot:P17480Gene Accssion:NP_055048   |
| SDS-PAGE MW           | 89KD   |
| Concentration         | 2.6mg/ml   |
| Formulation           | Rabbit IgG in pH7.4 PBS, 0.05% NaN <sub>3</sub> , 40% Glycerol.                    |
| Storage               | Store at -20°C   |

## Application Details

Western blotting: 1:200-1:1000

Immunohistochemistry:1:30-1:150

## Images



Gel: 6%SDS-PAGE

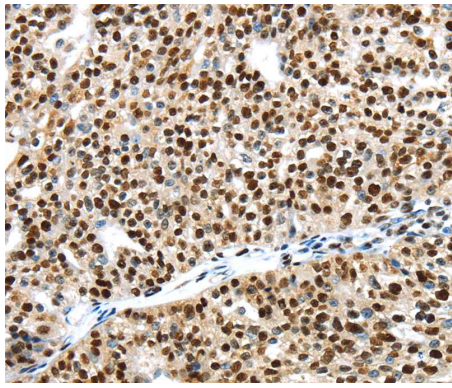
Lysates (from left to right): K562 and NIH/3T3 cell

Amount of lysate: 40ug per lane

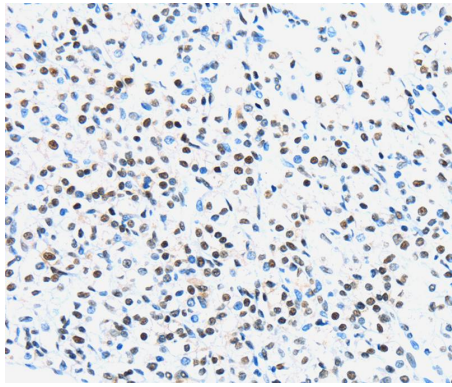
Primary antibody: 1/600 dilution

Secondary antibody dilution: 1/8000

Exposure time: 3 minutes



Immunohistochemical analysis of paraffin-embedded Human breast cancer tissue using #40278 at dilution 1/40.



Immunohistochemical analysis of paraffin-embedded Human prostate cancer tissue using #40278 at dilution 1/40.

## Background

This gene encodes a member of the HMG-box DNA-binding protein family. The encoded protein plays a critical role in ribosomal RNA transcription as a key component of the pre-initiation complex, mediating the recruitment of RNA polymerase I to rDNA promoter regions. The encoded protein may also play important roles in chromatin remodeling and pre-rRNA processing, and its activity is regulated by both phosphorylation and acetylation.?

Note: This product is for in vitro research use only and is not intended for use in humans or animals.