

## ERMAP Antibody

Catalog No: #39845

Orders: [order@signalwayantibody.com](mailto:order@signalwayantibody.com)Support: [tech@signalwayantibody.com](mailto:tech@signalwayantibody.com)

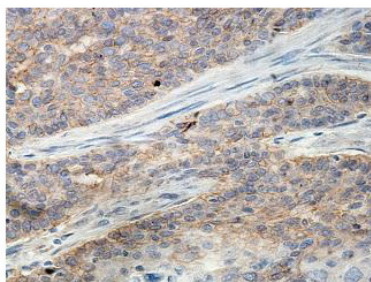
## Description

Product Name	ERMAP Antibody
Host Species	Rabbit
Clonality	Polyclonal
Purification	Affinity purified
Applications	ELISA WB IHC
Species Reactivity	Hu Ms Rt
Immunogen Type	Recombinant Protein
Immunogen Description	Rabbit polyclonal ERMAP (1) antibody was raised against a recombinated human ERMAP protein 304-467aa (BC099703).
Target Name	ERMAP
Concentration	1.0mg/ml
Formulation	PBS, pH 7.4 with 0.02% Sodium Azide
Storage	This product is stable for several weeks at 4°C as an undiluted liquid. Dilute only prior to immediate use. For extended storage, aliquot contents and freeze at -20°C or below. Avoid cycles of freezing and thawing. Expiration date is one (1) year from date of receipt.

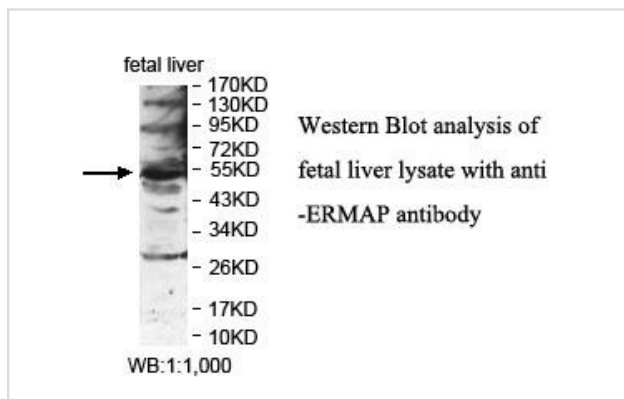
## Application Details

ELISA: 1:20000-1:80000 WB: 1:1000-1:2000 IHC: 1:100-1:500

## Images



**Immunohistochemical staining of formalin-fixed paraffin-embedded esophageal cancer showing membrane and cytoplasmic staining with anti-ERMAP antibody at a dilution of 1/100**



Note: This product is for in vitro research use only and is not intended for use in humans or animals.