

AIBZIP Antibody

Catalog No: #39715

Orders: order@signalwayantibody.comSupport: tech@signalwayantibody.com

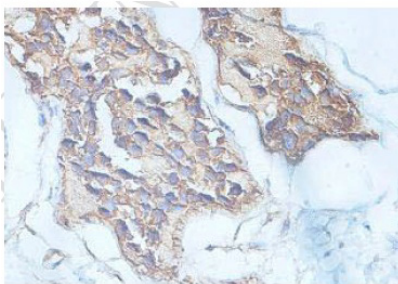
Description

Product Name	AIBZIP Antibody
Host Species	Rabbit
Clonality	Polyclonal
Purification	Affinity purified
Applications	ELISA WB IHC
Specificity	Human and predicted Rat and Mouse
Immunogen Type	Peptide-KLH
Immunogen Description	Rabbit polyclonal AIBZIP(1) antibody was raised against a peptide corresponding to the C terminal amino acids of Human AIBZIP. The peptide sequence: PSGRIRSVLHADEM.
Target Name	AIBZIP
Concentration	1.0mg/ml
Formulation	PBS, pH 7.4 with 0.02% Sodium Azide
Storage	This product is stable for several weeks at 4°C as an undiluted liquid. Dilute only prior to immediate use. For extended storage, aliquot contents and freeze at -20°C or below. Avoid cycles of freezing and thawing. Expiration date is one (1) year from date of receipt.

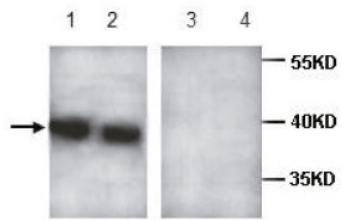
Application Details

ELISA: 1:20000-1:80000 WB: 1:1000-1:2000 IHC: 1:100-1:500

Images



Immunohistochemical staining of formalin-fixed paraffin-embedded prostate carcinoma showing cytoplasmic staining with anti-AIBZIP antibody at a dilution of 1/100.



Lane1: A549, No peptide blocked
Lane2: Fetal liver, No peptide blocked
Lane3: A549, Peptide blocked
Lane4: Fetal liver, Peptide blocked

Note: This product is for in vitro research use only and is not intended for use in humans or animals.