

# PELO Antibody

Catalog No: #39542



Orders: [order@signalwayantibody.com](mailto:order@signalwayantibody.com)

Support: [tech@signalwayantibody.com](mailto:tech@signalwayantibody.com)

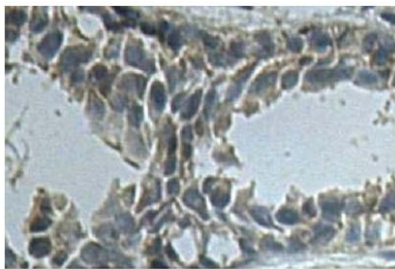
## Description

Product Name	PELO Antibody
Host Species	Rabbit
Purification	Affinity Purified
Applications	ELISA WB IHC
Species Reactivity	Hu Ms Rt
Immunogen Type	Recombinant Protein
Immunogen Description	Recombinant human PELO protein 71-333aa (BC005889)
Target Name	PELO
Concentration	1.0mg/ml
Formulation	PBS, pH 7.4 with 0.02% Sodium Azide
Storage	This product is stable for several weeks at 4°C as an undiluted liquid. Dilute only prior to immediate use. For extended storage, aliquot contents and freeze at -20°C or below. Avoid cycles of freezing and thawing. Expiration date is one (1) year from date of receipt.

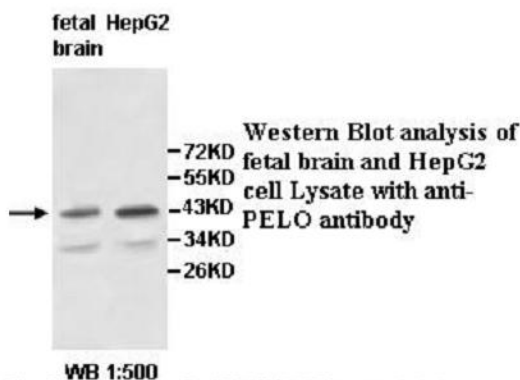
## Application Details

ELISA WB ELISA IHC

## Images



Immunohistochemical staining of formalin-fixed paraffin-embedded fetal prostate showing cytoplasmic and nucleus staining with anti-PELO antibody at a dilution of 1/100.



---

Note: This product is for in vitro research use only and is not intended for use in humans or animals.