

HSV-1 Antibody

Catalog No: #39395

Orders: order@signalwayantibody.comSupport: tech@signalwayantibody.com

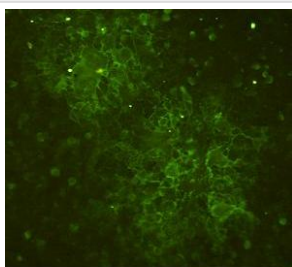
Description

Product Name	HSV-1 Antibody
Host Species	Mouse
Clonality	Monoclonal
Purification	Affinity purified
Applications	IF
Crossing Reactivity	HSV-1 Does not react with HSV-2
Immunogen Type	Peptide-KLH
Immunogen Description	Peptide
Target Name	HSV-1
Concentration	1.0mg/ml
Formulation	PBS, pH 7.4 with 0.02% Sodium Azide
Storage	This product is stable for several weeks at 4°C as an undiluted liquid. Dilute only prior to immediate use. For extended storage, aliquot contents and freeze at -20°C or below. Avoid cycles of freezing and thawing. Expiration date is one (1) year from date of receipt.

Application Details

IF

Images



HSV-1 antibody staining HSV1 in infected HeLa cells (green). HeLa Cells were paraformaldehyde-fixed and a FITC-conjugated rabbit polyclonal antibody (diluted 1:100) used as the secondary antibody.

Note: This product is for in vitro research use only and is not intended for use in humans or animals.