

## T7 tag Antibody

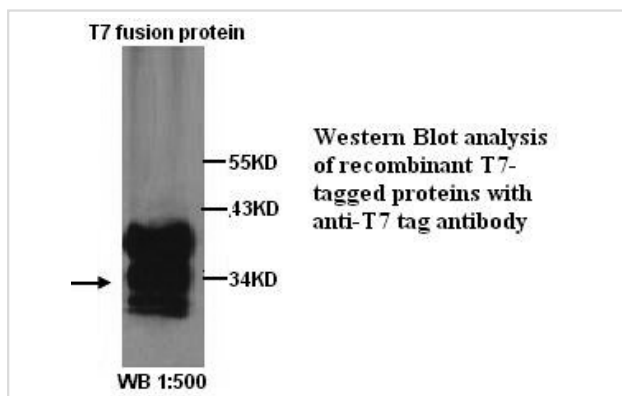
Catalog No: #39276

Orders: [order@signalwayantibody.com](mailto:order@signalwayantibody.com)Support: [tech@signalwayantibody.com](mailto:tech@signalwayantibody.com)

## Description

Product Name	T7 tag Antibody
Host Species	Rabbit
Clonality	Polyclonal
Purification	Affinity purified
Immunogen Type	Peptide-KLH
Immunogen Description	Rabbit polyclonal (1) T7 tag antibody was raised against a 11 amino acid peptide encoded in the leader sequence of T7 bacteriophage gene10The peptide sequence: MASMTGGQQMG
Target Name	T7 tag
Concentration	1.0mg/ml
Formulation	PBS, pH 7.4 with 0.02% Sodium Azide
Storage	This product is stable for several weeks at 4°C as an undiluted liquid. Dilute only prior to immediate use. For extended storage, aliquot contents and freeze at -20°C or below. Avoid cycles of freezing and thawing. Expiration date is one (1) year from date of receipt.

## Images



Note: This product is for in vitro research use only and is not intended for use in humans or animals.