

Ki-67 Antibody

Catalog No: #39270

Orders: order@signalwayantibody.comSupport: tech@signalwayantibody.com

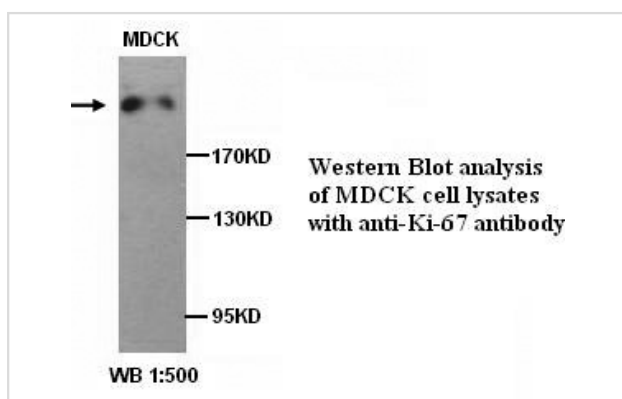
Description

Product Name	Ki-67 Antibody
Host Species	Rabbit
Clonality	Polyclonal
Purification	Purified
Applications	ELISA WB
Species Reactivity	Hu
Specificity	Not yet tested in other species.
Immunogen Type	Peptide-KLH
Immunogen Description	Synthetic peptide conjugated to KLH
Target Name	Ki-67
Concentration	1.0mg/ml
Formulation	PBS, pH 7.4 with 0.02% Sodium Azide
Storage	This product is stable for several weeks at 4°C as an undiluted liquid. Dilute only prior to immediate use. For extended storage, aliquot contents and freeze at -20°C or below. Avoid cycles of freezing and thawing. Expiration date is one (1) year from date of receipt.

Application Details

ELISA WB

Images



Note: This product is for in vitro research use only and is not intended for use in humans or animals.