

AAMP Antibody

Catalog No: #39243



Orders: order@signalwayantibody.com

Support: tech@signalwayantibody.com

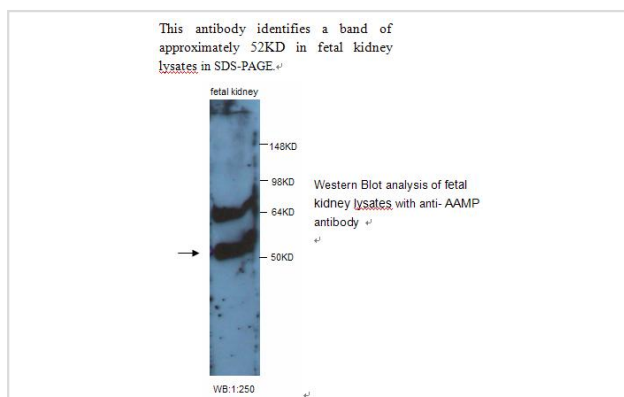
Description

Product Name	AAMP Antibody
Host Species	Rabbit
Clonality	Polyclonal
Purification	Affinity purified
Applications	ELISA WB
Species Reactivity	Hu Rt Ms
Specificity	AAMP Antibody can detect endogenous AAMP protein. Not tested with other proteins
Immunogen Type	Peptide-KLH
Immunogen Description	Synthetic peptide conjugated to KLH
Target Name	AAMP
Concentration	1.0mg/ml
Formulation	PBS, pH 7.4 with 0.02% Sodium Azide
Storage	This product is stable for several weeks at 4°C as an undiluted liquid. Dilute only prior to immediate use. For extended storage, aliquot contents and freeze at -20°C or below. Avoid cycles of freezing and thawing. Expiration date is one (1) year from date of receipt.

Application Details

ELISA WB: 1:250

Images



Note: This product is for in vitro research use only and is not intended for use in humans or animals.