

## RHOD antibody

Catalog No: #38940

Orders: [order@signalwayantibody.com](mailto:order@signalwayantibody.com)Support: [tech@signalwayantibody.com](mailto:tech@signalwayantibody.com)

## Description

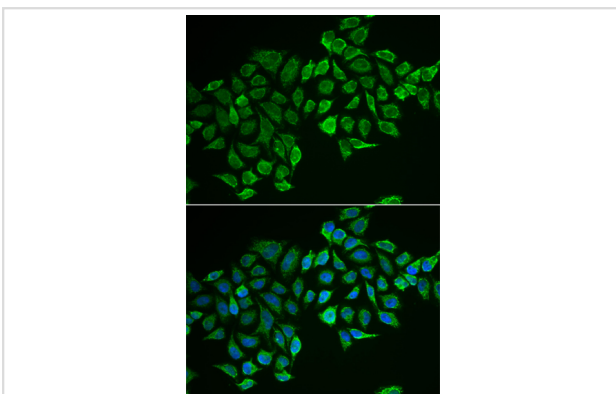
Product Name	RHOD antibody
Host Species	Rabbit
Clonality	Polyclonal
Purification	Antibodies were purified by affinity purification using immunogen.
Applications	WB IF
Species Reactivity	Hu
Specificity	The antibody detects endogenous level of total RHOD antibody.
Immunogen Type	Recombinant Protein
Immunogen Description	Recombinant protein of human RHOD.
Target Name	RHOD
Other Names	Rho; ARHD; RHOM; RHOHP1;
Accession No.	Swiss-Prot#: O00212NCBI Gene ID: 29984
SDS-PAGE MW	23kd
Concentration	1.0mg/ml
Formulation	Supplied at 1.0mg/mL in phosphate buffered saline (without Mg <sup>2+</sup> and Ca <sup>2+</sup> ), pH 7.4, 150mM NaCl, 0.02% sodium azide and 50% glycerol.
Storage	Store at -20°C

## Application Details

Western blotting: □ 1:500 - 1:2000

Immunofluorescence: □ 1:50 - 1:100

## Images



Immunofluorescence analysis of MCF-7 cell using RHOD antibody. Blue: DAPI for nuclear staining.

## Background

Ras homolog, or Rho, proteins interact with protein kinases and may serve as targets for activated GTPase. They play a critical role in muscle differentiation. The protein encoded by this gene binds GTP and is a member of the small GTPase superfamily. It is involved in endosome dynamics

and reorganization of the actin cytoskeleton, and it may coordinate membrane transport with the function of the cytoskeleton. Two transcript variants encoding different isoforms have been found for this gene.

---

Note: This product is for in vitro research use only and is not intended for use in humans or animals.