

PRAME antibody

Catalog No: #38933

Orders: order@signalwayantibody.comSupport: tech@signalwayantibody.com

Description

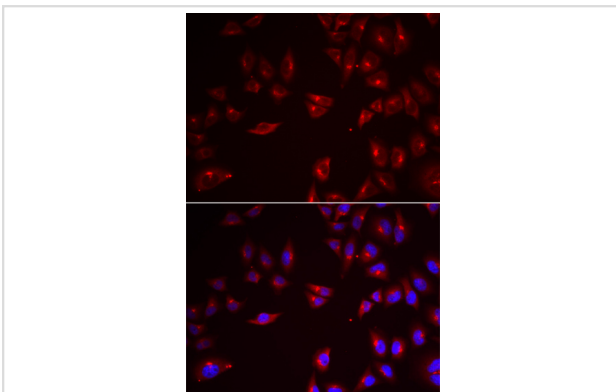
Product Name	PRAME antibody
Host Species	Rabbit
Clonality	Polyclonal
Purification	Antibodies were purified by affinity purification using immunogen.
Applications	WB IF
Species Reactivity	Hu
Specificity	The antibody detects endogenous level of total PRAME antibody.
Immunogen Type	Recombinant Protein
Immunogen Description	Recombinant protein of human PRAME.
Target Name	PRAME
Other Names	MAPE; OIP4; CT130; OIP-4;
Accession No.	Swiss-Prot#: P78395NCBI Gene ID: 23532
SDS-PAGE MW	57kd
Concentration	1.0mg/ml
Formulation	Supplied at 1.0mg/mL in phosphate buffered saline (without Mg ²⁺ and Ca ²⁺), pH 7.4, 150mM NaCl, 0.02% sodium azide and 50% glycerol.
Storage	Store at -20°C

Application Details

Western blotting: □ 1:500 - 1:2000

Immunofluorescence: □ 1:50 - 1:100

Images



Immunofluorescence analysis of U2OS cell using PRAME antibody. Blue: DAPI for nuclear staining.

Background

This gene encodes an antigen that is preferentially expressed in human melanomas and that is recognized by cytolytic T lymphocytes. It is not expressed in normal tissues, except testis. The encoded protein acts as a repressor of retinoic acid receptor, and likely confers a growth advantage to

cancer cells via this function. Alternative splicing results in multiple transcript variants.

Note: This product is for in vitro research use only and is not intended for use in humans or animals.