

RCVRN antibody

Catalog No: #38883

Orders: order@signalwayantibody.comSupport: tech@signalwayantibody.com

Description

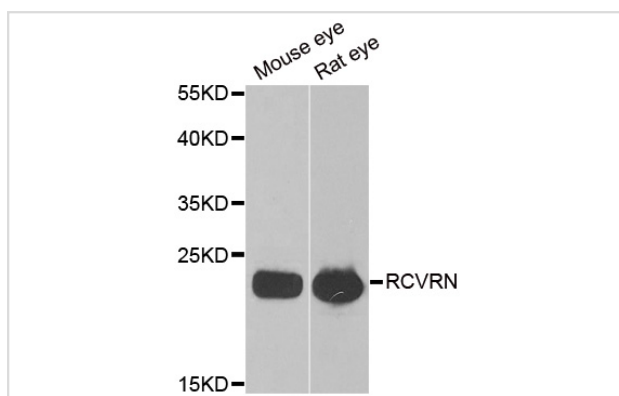
Product Name	RCVRN antibody
Host Species	Rabbit
Clonality	Polyclonal
Purification	Antibodies were purified by affinity purification using immunogen.
Applications	WB IF
Species Reactivity	Hu
Specificity	The antibody detects endogenous level of total RCVRN antibody.
Immunogen Type	Recombinant Protein
Immunogen Description	Recombinant protein of human RCVRN.
Target Name	RCVRN
Other Names	RCV1;
Accession No.	Swiss-Prot#: P35243NCBI Gene ID: 5957
SDS-PAGE MW	23kd
Concentration	1.0mg/ml
Formulation	Supplied at 1.0mg/mL in phosphate buffered saline (without Mg ²⁺ and Ca ²⁺), pH 7.4, 150mM NaCl, 0.02% sodium azide and 50% glycerol.
Storage	Store at -20°C

Application Details

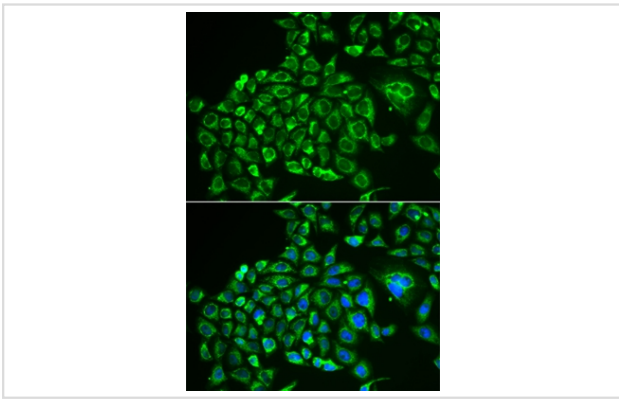
Western blotting: □ 1:500 - 1:2000

Immunofluorescence: 1:50 - 1:200

Images



Western blot analysis of extracts of various tissues, using RCVRN antibody.



Immunofluorescence analysis of MCF-7 cell using RCVRN antibody. Blue: DAPI for nuclear staining.

Background

This gene encodes a member of the recoverin family of neuronal calcium sensors. The encoded protein contains three calcium-binding EF-hand domains and may prolong the termination of the phototransduction cascade in the retina by blocking the phosphorylation of photo-activated rhodopsin. Recoverin may be the antigen responsible for cancer-associated retinopathy.

Note: This product is for in vitro research use only and is not intended for use in humans or animals.