

MLN antibody

Catalog No: #38868

Orders: order@signalwayantibody.comSupport: tech@signalwayantibody.com

Description

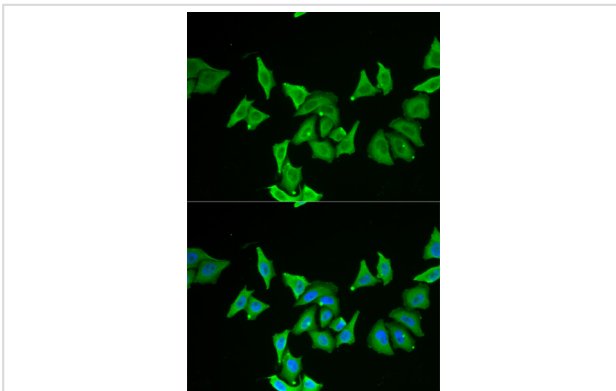
Product Name	MLN antibody
Host Species	Rabbit
Clonality	Polyclonal
Purification	Antibodies were purified by affinity purification using immunogen.
Applications	WB IF
Species Reactivity	Hu
Specificity	The antibody detects endogenous level of total MLN antibody.
Immunogen Type	Recombinant Protein
Immunogen Description	Recombinant protein of human MLN.
Target Name	MLN
Accession No.	Swiss-Prot#: P12872NCBI Gene ID: 4295
SDS-PAGE MW	12kd
Concentration	1.0mg/ml
Formulation	Supplied at 1.0mg/mL in phosphate buffered saline (without Mg ²⁺ and Ca ²⁺), pH 7.4, 150mM NaCl, 0.02% sodium azide and 50% glycerol.
Storage	Store at -20°C

Application Details

Western blotting: □1:500 - 1:2000

Immunofluorescence: □1:50 - 1:100

Images



Immunofluorescence analysis of U2OS cell using MLN antibody. Blue: DAPI for nuclear staining.

Background

This gene encodes a small peptide hormone that is secreted by cells of the small intestine to regulate gastrointestinal contractions and motility. Proteolytic processing of the secreted protein produces the mature peptide and a byproduct referred to as motilin-associated peptide (MAP). Three transcript variants encoding different preproprotein isoforms but the same mature peptide have been found for this gene.

Note: This product is for in vitro research use only and is not intended for use in humans or animals.