

## ASL antibody

Catalog No: #38844

Orders: [order@signalwayantibody.com](mailto:order@signalwayantibody.com)Support: [tech@signalwayantibody.com](mailto:tech@signalwayantibody.com)

## Description

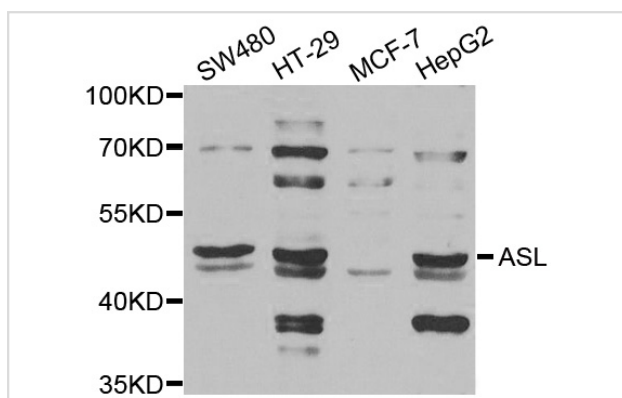
Product Name	ASL antibody
Host Species	Rabbit
Clonality	Polyclonal
Purification	Antibodies were purified by affinity purification using immunogen.
Applications	WB IF
Species Reactivity	Hu Ms
Specificity	The antibody detects endogenous level of total ASL antibody.
Immunogen Type	Recombinant Protein
Immunogen Description	Recombinant protein of human ASL.
Target Name	ASL
Other Names	ASAL;
Accession No.	Swiss-Prot#: P04424NCBI Gene ID: 435
SDS-PAGE MW	51kd
Concentration	1.0mg/ml
Formulation	Supplied at 1.0mg/mL in phosphate buffered saline (without Mg <sup>2+</sup> and Ca <sup>2+</sup> ), pH 7.4, 150mM NaCl, 0.02% sodium azide and 50% glycerol.
Storage	Store at -20°C

## Application Details

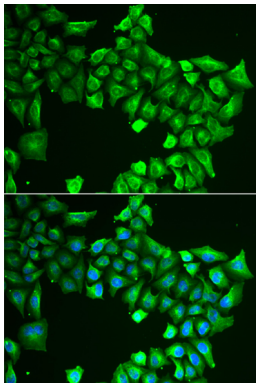
Western blotting: □ 1:500 - 1:2000

Immunofluorescence: 1:50 - 1:200

## Images



Western blot analysis of extracts of various cell lines, using ASL antibody.



Immunofluorescence analysis of HeLa cell using ASL antibody. Blue: DAPI for nuclear staining.

## Background

This gene encodes a member of the lyase 1 family. The encoded protein forms a cytosolic homotetramer and primarily catalyzes the reversible hydrolytic cleavage of argininosuccinate into arginine and fumarate, an essential step in the liver in detoxifying ammonia via the urea cycle. Mutations in this gene result in the autosomal recessive disorder argininosuccinic aciduria, or argininosuccinic acid lyase deficiency. A nontranscribed pseudogene is also located on the long arm of chromosome 22. Alternatively spliced transcript variants encoding different isoforms have been described.

Note: This product is for in vitro research use only and is not intended for use in humans or animals.