

MSLN antibody

Catalog No: #38740

Orders: order@signalwayantibody.comSupport: tech@signalwayantibody.com

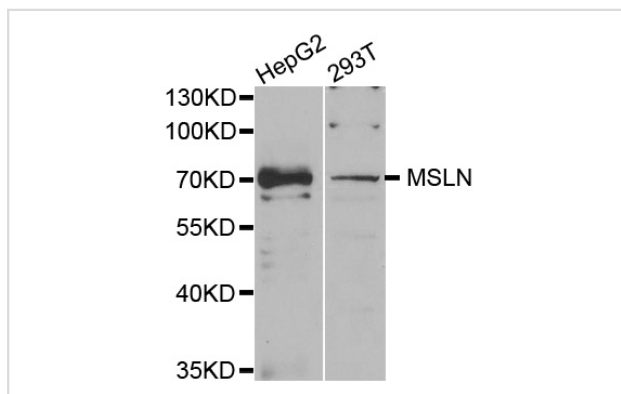
Description

Product Name	MSLN antibody
Host Species	Rabbit
Clonality	Polyclonal
Purification	Antibodies were purified by affinity purification using immunogen.
Applications	WB
Species Reactivity	Hu
Specificity	The antibody detects endogenous level of total MSLN antibody.
Immunogen Type	Recombinant Protein
Immunogen Description	Recombinant protein of human MSLN.
Target Name	MSLN
Other Names	MPF; SMRP;
Accession No.	Swiss-Prot#: Q13421NCBI Gene ID: 10232
SDS-PAGE MW	68kd
Concentration	1.0mg/ml
Formulation	Supplied at 1.0mg/mL in phosphate buffered saline (without Mg ²⁺ and Ca ²⁺), pH 7.4, 150mM NaCl, 0.02% sodium azide and 50% glycerol.
Storage	Store at -20°C

Application Details

Western blotting: □ 1:500 - 1:2000

Images



Western blot analysis of extracts of various cell lines, using MSLN antibody.

Background

This gene encodes a precursor protein that is cleaved into two products, megakaryocyte potentiating factor and mesothelin. Megakaryocyte potentiation factor functions as a cytokine that can stimulate colony formation in bone marrow megakaryocytes. Mesothelin is a glycosylphosphatidylinositol-anchored cell-surface protein that may function as a cell adhesion protein. This protein is overexpressed in epithelial mesotheliomas, ovarian cancers and in specific squamous cell carcinomas. Alternative splicing results in multiple transcript variants.

Note: This product is for in vitro research use only and is not intended for use in humans or animals.