

CTCFL antibody

Catalog No: #38735

Orders: order@signalwayantibody.comSupport: tech@signalwayantibody.com

Description

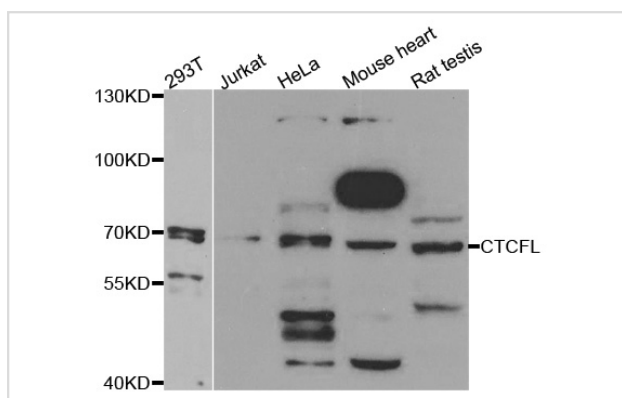
Product Name	CTCFL antibody
Host Species	Rabbit
Clonality	Polyclonal
Purification	Antibodies were purified by affinity purification using immunogen.
Applications	WB IF
Species Reactivity	Hu Ms Rt
Specificity	The antibody detects endogenous level of total CTCFL antibody.
Immunogen Type	Recombinant Protein
Immunogen Description	Recombinant protein of human CTCFL.
Target Name	CTCFL
Other Names	CT27; BORIS; CTCF-T; HMGB1L1; dJ579F20.2;
Accession No.	Swiss-Prot#: Q8NI51NCBI Gene ID: 140690
SDS-PAGE MW	75kd
Concentration	1.0mg/ml
Formulation	Supplied at 1.0mg/mL in phosphate buffered saline (without Mg ²⁺ and Ca ²⁺), pH 7.4, 150mM NaCl, 0.02% sodium azide and 50% glycerol.
Storage	Store at -20°C

Application Details

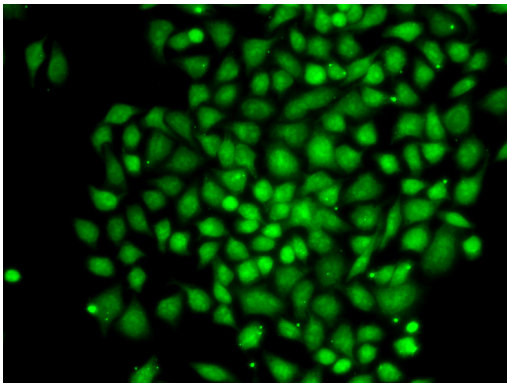
Western blotting: □ 1:500 - 1:2000

Immunofluorescence: □ 1:20 - 1:100

Images



Western blot analysis of extracts of various cell lines, using CTCFL antibody.



Immunofluorescence analysis of MCF-7 cell using CTCFL antibody. Blue: DAPI for nuclear staining.

Background

CCCTC-binding factor (CTCF), an 11-zinc-finger factor involved in gene regulation, utilizes different zinc fingers to bind varying DNA target sites. CTCF forms methylation-sensitive insulators that regulate X-chromosome inactivation. This gene is a paralog of CTCF and appears to be expressed primarily in the cytoplasm of spermatocytes, unlike CTCF which is expressed primarily in the nucleus of somatic cells. CTCF and the protein encoded by this gene are normally expressed in a mutually exclusive pattern that correlates with resetting of methylation marks during male germ cell differentiation. Multiple alternatively spliced transcript variants encoding different isoforms have been found for this gene.

Note: This product is for in vitro research use only and is not intended for use in humans or animals.