

## NPY antibody

Catalog No: #38619

Orders: [order@signalwayantibody.com](mailto:order@signalwayantibody.com)Support: [tech@signalwayantibody.com](mailto:tech@signalwayantibody.com)

## Description

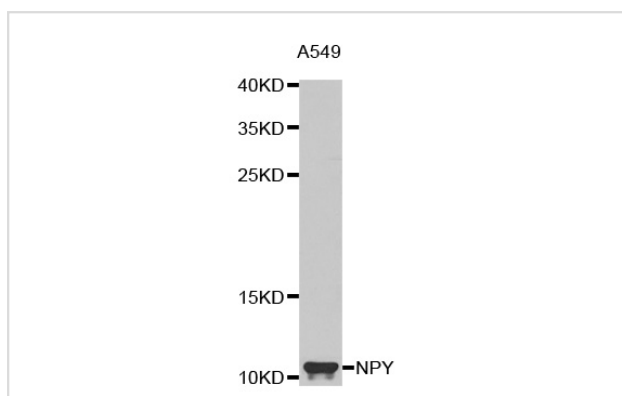
Product Name	NPY antibody
Host Species	Rabbit
Clonality	Polyclonal
Purification	Antibodies were purified by affinity purification using immunogen.
Applications	WB IHC
Species Reactivity	Hu Ms Rt
Specificity	The antibody detects endogenous level of total NPY antibody.
Immunogen Type	Recombinant Protein
Immunogen Description	Recombinant protein of human NPY.
Target Name	NPY
Other Names	PYY4
Accession No.	Swiss-Prot#: P01303NCBI Gene ID: 4852
SDS-PAGE MW	11kd
Concentration	1.0mg/ml
Formulation	Supplied at 1.0mg/mL in phosphate buffered saline (without Mg <sup>2+</sup> and Ca <sup>2+</sup> ), pH 7.4, 150mM NaCl, 0.02% sodium azide and 50% glycerol.
Storage	Store at -20°C

## Application Details

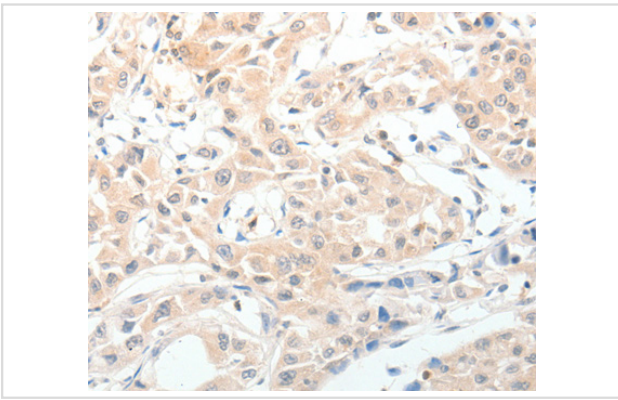
Western blotting: □ 1:500 - 1:1000

Immunohistochemistry: □ 1:50 - 1:100

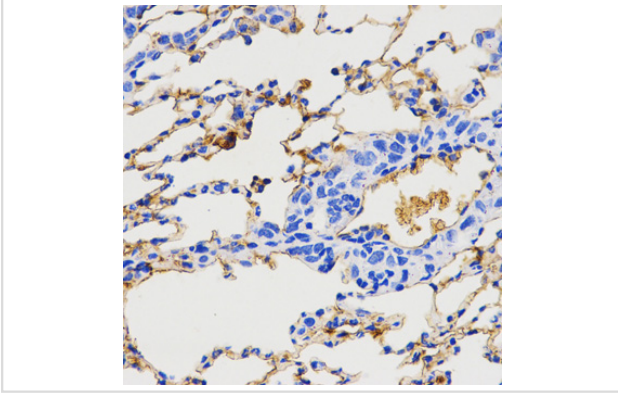
## Images



Western blot analysis of extracts of A549 cell line, using NPY antibody.



Immunohistochemistry analysis of paraffin-embedded human lung cancer tissue using NPY antibody.



Immunohistochemistry analysis of paraffin-embedded mouse lung metastasis using NPY antibody at dilution of 1:200 (x400 lens).

## Background

This gene encodes a neuropeptide that is widely expressed in the central nervous system and influences many physiological processes, including cortical excitability, stress response, food intake, circadian rhythms, and cardiovascular function. The neuropeptide functions through G protein-coupled receptors to inhibit adenylyl cyclase, activate mitogen-activated protein kinase (MAPK), regulate intracellular calcium levels, and activate potassium channels. A polymorphism in this gene resulting in a change of leucine 7 to proline in the signal peptide is associated with elevated cholesterol levels, higher alcohol consumption, and may be a risk factor for various metabolic and cardiovascular diseases.

Note: This product is for in vitro research use only and is not intended for use in humans or animals.