

## INA antibody

Catalog No: #38584

Orders: [order@signalwayantibody.com](mailto:order@signalwayantibody.com)Support: [tech@signalwayantibody.com](mailto:tech@signalwayantibody.com)

## Description

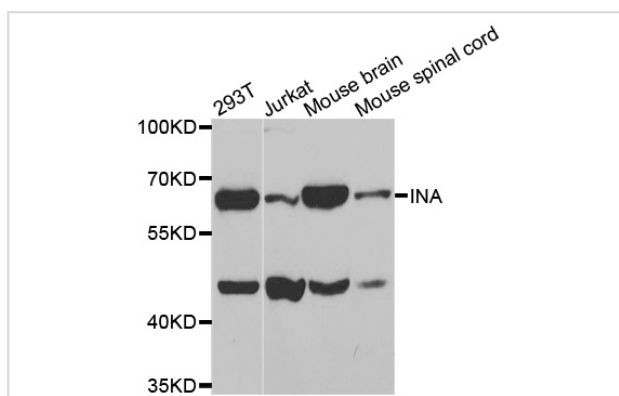
Product Name	INA antibody
Host Species	Rabbit
Clonality	Polyclonal
Purification	Antibodies were purified by affinity purification using immunogen.
Applications	WB IHC
Species Reactivity	Hu Ms
Specificity	The antibody detects endogenous level of total INA antibody.
Immunogen Type	Peptide
Immunogen Description	A synthetic peptide of human INA.
Target Name	INA
Other Names	NEF5; NF-66; TXBP-1
Accession No.	Swiss-Prot#: Q16352NCBI Gene ID: 9118
SDS-PAGE MW	55kd
Concentration	1.0mg/ml
Formulation	Supplied at 1.0mg/mL in phosphate buffered saline (without Mg <sup>2+</sup> and Ca <sup>2+</sup> ), pH 7.4, 150mM NaCl, 0.02% sodium azide and 50% glycerol.
Storage	Store at -20°C

## Application Details

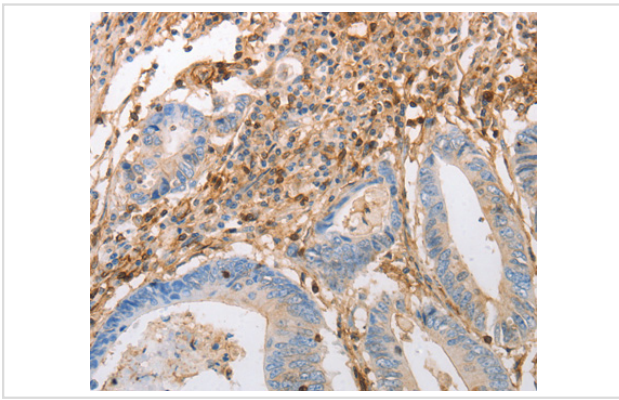
Western blotting: □ 1:500 - 1:2000

Immunohistochemistry: □ 1:50 - 1:200

## Images



Western blot analysis of extracts of various cell lines, using INA antibody.



Immunohistochemistry analysis of paraffin-embedded human colon cancer tissue using INA antibody.

## Background

Neurofilaments are type IV intermediate filament heteropolymers composed of light, medium, and heavy chains. Neurofilaments comprise the axoskeleton and they functionally maintain the neuronal caliber. They may also play a role in intracellular transport to axons and dendrites. This gene is a member of the intermediate filament family and is involved in the morphogenesis of neurons.

Note: This product is for in vitro research use only and is not intended for use in humans or animals.