

INS antibody

Catalog No: #38355

Orders: order@signalwayantibody.comSupport: tech@signalwayantibody.com

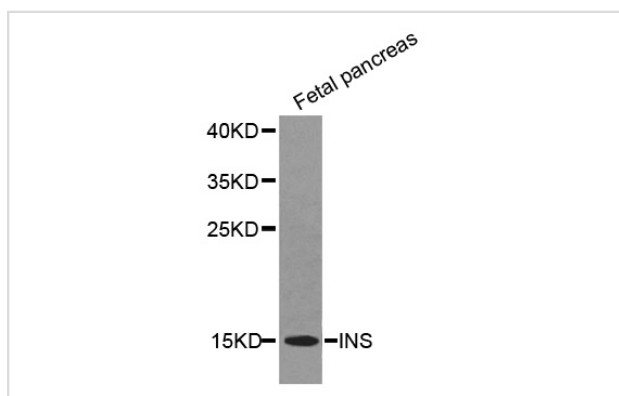
Description

Product Name	INS antibody
Host Species	Rabbit
Clonality	Polyclonal
Purification	Antibodies were purified by affinity purification using immunogen.
Applications	WB
Species Reactivity	Hu Ms Rt
Specificity	The antibody detects endogenous level of total INS antibody.
Immunogen Type	Recombinant Protein
Immunogen Description	Recombinant protein of human INS.
Target Name	INS
Other Names	ILPR; IRDN; IDDM2; MODY10; Insulin;
Accession No.	Swiss-Prot#: P01308NCBI Gene ID: 3630
SDS-PAGE MW	12kd
Concentration	1.0mg/ml
Formulation	Supplied at 1.0mg/mL in phosphate buffered saline (without Mg ²⁺ and Ca ²⁺), pH 7.4, 150mM NaCl, 0.02% sodium azide and 50% glycerol.
Storage	Store at -20°C

Application Details

Western blotting: □ 1:500 - 1:2000

Images



Western blot analysis of extracts of fetal pancreas cell lines, using INS antibody.

Background

The maintenance of glucose homeostasis is an essential physiological process that is regulated by hormones. An elevation in blood glucose levels during feeding stimulates insulin release from pancreatic β cells through a glucose sensing pathway (1). Insulin is synthesized as a precursor molecule, proinsulin, which is processed prior to secretion. A- and B-peptides are joined together by a disulfide bond to form insulin, while the central portion of the precursor molecule is cleaved and released as the C-peptide. Insulin stimulates glucose uptake from blood into skeletal muscle and

adipose tissue. Insulin deficiency leads to type 1 diabetes mellitus (2).

Note: This product is for in vitro research use only and is not intended for use in humans or animals.