

LTA antibody

Catalog No: #38252

Orders: order@signalwayantibody.comSupport: tech@signalwayantibody.com

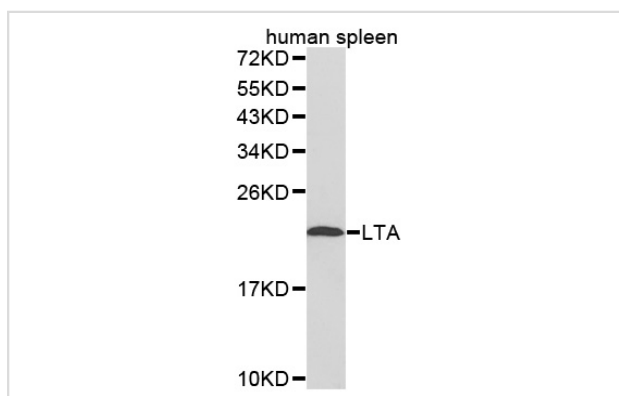
Description

Product Name	LTA antibody
Host Species	Rabbit
Clonality	Polyclonal
Purification	Antibodies were purified by affinity purification using immunogen.
Applications	WB
Species Reactivity	Hu
Specificity	The antibody detects endogenous level of total LTA antibody.
Immunogen Type	Recombinant Protein
Immunogen Description	Recombinant protein of human LTA.
Target Name	LTA
Other Names	LT; TNFB; TNFSF1;
Accession No.	Swiss-Prot#: P01374NCBI Gene ID: 4049
SDS-PAGE MW	22kd
Concentration	1.0mg/ml
Formulation	Supplied at 1.0mg/mL in phosphate buffered saline (without Mg ²⁺ and Ca ²⁺), pH 7.4, 150mM NaCl, 0.02% sodium azide and 50% glycerol.
Storage	Store at -20°C

Application Details

Western blotting: □ 1:500 - 1:2000

Images



Western blot analysis of extracts of human spleen cell lines, using LTA antibody.

Background

Lymphotoxin- α (LT- α), also known as TNFB α C β , is a member of the TNF superfamily of proteins (1). NK cells, T cells, B cells, and lymphoid tissue-inducer cells express LT- α (1). LT- α can be secreted as a soluble homotrimer or form membrane bound heterotrimers with lymphotoxin- β (LT α 1 β 2 or LT α 2 β 1) which can be cleaved from the cell surface by matrix metalloproteases (1,2). Soluble LT- α binds to and signals through TNFR1/TNFR2, activating the canonical NF- κ B pathway (1). In contrast, LT α 1 β 2 heterodimers bind to the LT β R receptor and activate the

noncanonical NF- κ B pathway (1). As a result, LT- α and TNF- α have overlapping functions. Soluble LT- α and LT α 1 β 2 play key roles in lymphangiogenesis (3). The LT α 1 β 2/LT β R axis is essential for the development of lymphoid tissue (1,3).

Note: This product is for in vitro research use only and is not intended for use in humans or animals.