

ALB antibody

Catalog No: #38231

Orders: order@signalwayantibody.comSupport: tech@signalwayantibody.com

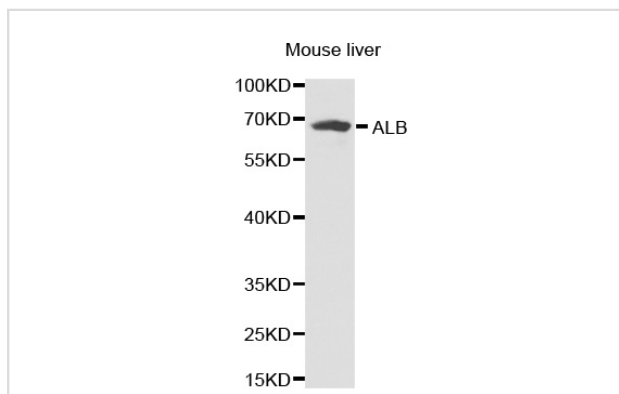
Description

Product Name	ALB antibody
Host Species	Rabbit
Clonality	Polyclonal
Purification	Antibodies were purified by affinity purification using immunogen.
Applications	WB
Species Reactivity	Hu Ms Rt
Specificity	The antibody detects endogenous level of total ALB antibody.
Immunogen Type	Recombinant Protein
Immunogen Description	Recombinant protein of human ALB.
Target Name	ALB
Other Names	DKFZp779N1935; PRO0883; PRO0903; PRO1341; ALB;
Accession No.	Swiss-Prot#: P02768NCBI Gene ID: 213
SDS-PAGE MW	69kd
Concentration	1.0mg/ml
Formulation	Supplied at 1.0mg/mL in phosphate buffered saline (without Mg ²⁺ and Ca ²⁺), pH 7.4, 150mM NaCl, 0.02% sodium azide and 50% glycerol.
Storage	Store at -20°C

Application Details

Western blotting: □ 1:500 - 1:2000

Images



Western blot analysis of extracts of mouse liver, using ALB antibody.

Background

Serum albumin is the most abundant protein in plasma. It accounts for over 50% of total human plasma protein content, having a concentration of approximately 40 g/L. Albumin is predominantly synthesized in the liver and is a major transportation component for many endogenous and exogenous compounds, including fatty acids, steroid hormones, metabolites and drugs. It is also responsible for maintaining colloid osmotic pressure and may affect microvascular integrity (1).

Note: This product is for in vitro research use only and is not intended for use in humans or animals.