

SRPX antibody

Catalog No: #38219

Orders: order@signalwayantibody.comSupport: tech@signalwayantibody.com

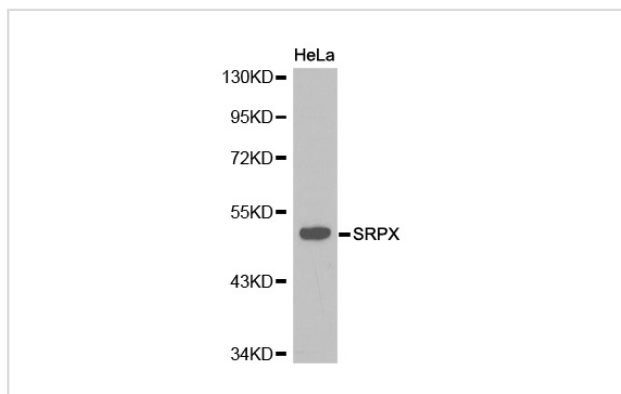
Description

Product Name	SRPX antibody
Host Species	Rabbit
Clonality	Polyclonal
Purification	Antibodies were purified by affinity purification using immunogen.
Applications	WB
Species Reactivity	Hu Ms Rt
Specificity	The antibody detects endogenous level of total SRPX antibody.
Immunogen Type	Recombinant Protein
Immunogen Description	Recombinant protein of human SRPX.
Target Name	SRPX
Other Names	SRPX;DRS;ETX1;SRPX1;
Accession No.	Swiss-Prot#: P78539 NCBI Gene ID: 8406
SDS-PAGE MW	52kd
Concentration	1.0mg/ml
Formulation	Supplied at 1.0mg/mL in phosphate buffered saline (without Mg ²⁺ and Ca ²⁺), pH 7.4, 150mM NaCl, 0.02% sodium azide and 50% glycerol.
Storage	Store at -20°C

Application Details

Western blotting: □ 1:500 - 1:2000

Images



Western blot analysis of HeLa cell lysate using SRPX antibody.

Background

X-linked retinitis pigmentosa (XLRP) is a retinal degeneration disorder. The most common form of XLRP has been localized to the gene locus RP3 by linkage and deletion analysis. RP3 maps to chromosome Xp21.1 between CYBB and OTC. The sushi-repeat-containing protein, x chromosome (SRPX) gene, also designated ETX1, resides within this region and is deleted in XLRP patients. There are at least two splice variants of SRPX, one of which contains a thirty amino acid signal peptide. Both variants contain three complement control protein domains, a hydrophobic region for

membrane anchorage, and a cytoplasmic carboxy terminus. SRPX is expressed in retina and heart. SRPX is highly homologous to the drs (downregulated by v-src) human homolog, which suggests a role for SRPX as a tumor suppressor.

Note: This product is for in vitro research use only and is not intended for use in humans or animals.