

DCX antibody

Catalog No: #38200

Orders: order@signalwayantibody.com

Support: tech@signalwayantibody.com

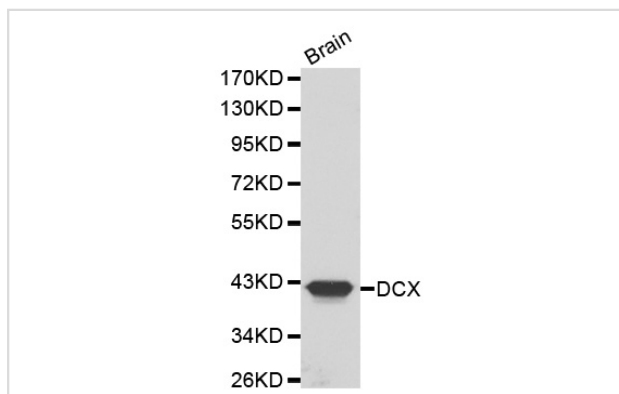
Description

Product Name	DCX antibody
Host Species	Rabbit
Clonality	Polyclonal
Purification	Antibodies were purified by affinity purification using immunogen.
Applications	WB
Species Reactivity	Hu Ms Rt
Specificity	The antibody detects endogenous level of total DCX antibody.
Immunogen Type	Recombinant Protein
Immunogen Description	Recombinant protein of human DCX.
Target Name	DCX
Other Names	DCX;DBCN;DC;LISX;SCLH;XLIS;
Accession No.	Swiss-Prot#: O43602NCBI Gene ID: 1641
SDS-PAGE MW	45kd
Concentration	1.0mg/ml
Formulation	Supplied at 1.0mg/mL in phosphate buffered saline (without Mg ²⁺ and Ca ²⁺), pH 7.4, 150mM NaCl, 0.02% sodium azide and 50% glycerol.
Storage	Store at -20°C

Application Details

Western blotting: □ 1:500 - 1:2000

Images



Western blot analysis of brain cell lysate using DCX antibody.

Background

Mutations in Doublecortin cause Lissencephaly (smooth brain), a neuronal migration disorder characterized by epilepsy and mental retardation (1). Doublecortin is a microtubule associated protein that stabilizes and bundles microtubules. A conserved doublecortin domain mediates the interaction with microtubules, and interestingly most missense mutations cluster in this domain (2). Kinases JNK, CDK5 and PKA phosphorylate doublecortin. JNK phosphorylates Thr321, Thr331 and Ser334 while PKA phosphorylates Ser47 and CDK5 phosphorylates Ser297 (3-5). Phosphorylation of Ser297

lowers the affinity of doublecortin to microtubules. Furthermore, mutations of Ser297 result in migration defects (5).

Note: This product is for in vitro research use only and is not intended for use in humans or animals.