

## GCG antibody

Catalog No: #38190

Orders: [order@signalwayantibody.com](mailto:order@signalwayantibody.com)Support: [tech@signalwayantibody.com](mailto:tech@signalwayantibody.com)

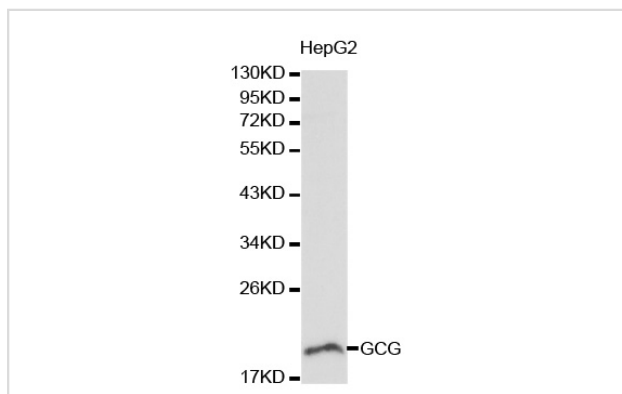
## Description

Product Name	GCG antibody
Host Species	Rabbit
Clonality	Polyclonal
Purification	Antibodies were purified by affinity purification using immunogen.
Applications	WB
Species Reactivity	Hu Ms Rt
Specificity	The antibody detects endogenous level of total GCG antibody.
Immunogen Type	Recombinant Protein
Immunogen Description	Recombinant protein of human GCG.
Target Name	GCG
Other Names	GCG;GLP 2;glucagon;GLP2;GLP1;GRPP Oxyntomodulin
Accession No.	Swiss-Prot#: P01275NCBI Gene ID: 2641
SDS-PAGE MW	21kd
Concentration	1.0mg/ml
Formulation	Supplied at 1.0mg/mL in phosphate buffered saline (without Mg <sup>2+</sup> and Ca <sup>2+</sup> ), pH 7.4, 150mM NaCl, 0.02% sodium azide and 50% glycerol.
Storage	Store at -20°C

## Application Details

Western blotting: □ 1:500 - 1:2000

## Images



Western blot analysis of HepG2 cell lysate using GCG antibody.

## Background

Glucose homeostasis is regulated by a variety of hormones including glucagon. Glucagon is synthesized as the precursor molecule proglucagon and is proteolytically processed to yield the mature peptide in  $\alpha$  cells of the pancreatic islets. Glucagon causes the release of glucose from glycogen and stimulates gluconeogenesis in the liver (1,2).

---

Note: This product is for in vitro research use only and is not intended for use in humans or animals.