

Carcinoembryonic Antigen Antibody

Catalog No: #38106

Orders: order@signalwayantibody.comSupport: tech@signalwayantibody.com

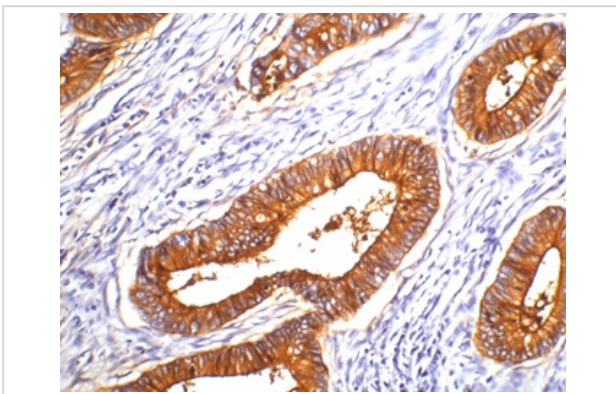
Description

Product Name	Carcinoembryonic Antigen Antibody
Host Species	Mouse
Clonality	Monoclonal
Clone No.	10E1
Purification	Affinity purification using immunogen.
Applications	IHC
Species Reactivity	Hu
Specificity	The CEA Mouse Monoclonal Antibody detects endogenous CEA proteins.
Target Name	Carcinoembryonic Antigen Antibody
Other Names	CEA;Pregnancy-specific glycoprotein 2; PS-beta-E; PS-beta-G-2; PSBG-2; PSBG2; PSG1; PSG2; PSGGB
Accession No.	Swiss-Prot#:P11465
Concentration	1.0mg/ml
Formulation	Mouse IgG1 in phosphate buffered saline (without Mg ²⁺ and Ca ²⁺), pH 7.4, 150mM NaCl, 0.02% sodium azide and 50% glycerol.
Storage	Store at -20°C

Application Details

Immunohistochemistry: 1:200

Images



IHC staining of human colon cancer tissue with CEA mouse mAb(10E1) diluted at 1:200.

Background

CEA is synthesised during development in the fetal gut, and is re-expressed in increased amounts in intestinal carcinomas and several other tumors. Antibodies to CEA are useful in identifying the origin of various metastatic adenocarcinomas and in distinguishing pulmonary adenocarcinomas (60 to 70% are CEA+) from pleural mesotheliomas (rarely or weakly CEA+).

Note: This product is for in vitro research use only and is not intended for use in humans or animals.