

β II tubulin Mouse Monoclonal Antibody (Rodent Preferred)

Catalog No: #38092

Orders: order@signalwayantibody.comSupport: tech@signalwayantibody.com

Description

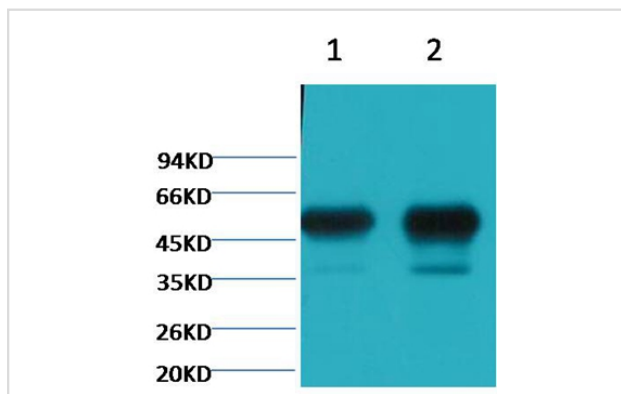
Product Name	β II tubulin Mouse Monoclonal Antibody (Rodent Preferred)
Host Species	Mouse
Clonality	Monoclonal
Purification	Affinity purification using immunogen.
Applications	WB IP
Species Reactivity	Rt Ms
Specificity	The β II tubulin Mouse Monoclonal Antibody detects endogenous β II tubulin protein.
Target Name	β II tubulin
SDS-PAGE MW	50kd
Concentration	1.0mg/ml
Formulation	Mouse IgG1 in phosphate buffered saline (without Mg ²⁺ and Ca ²⁺), pH 7.4, 150mM NaCl, 0.02% sodium azide and 50% glycerol.
Storage	Store at -20°C

Application Details

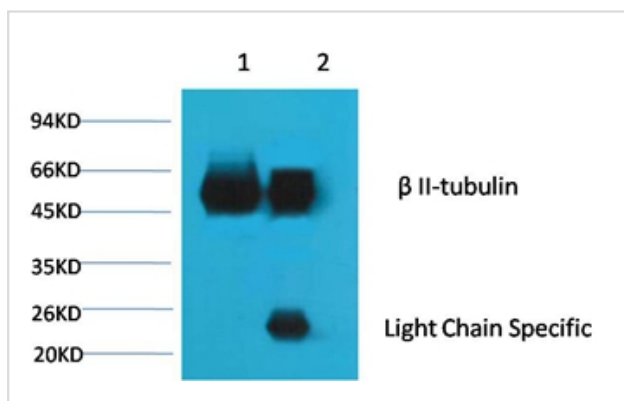
Western blotting: 1:50000~1:100000

Immunoprecipitation: 1:200

Images



Western blot analysis of 1) Mouse Brain tissue, 2) Rat Brain tissue, using #38092 diluted at 1:100,000.



1B'Input: Mouse Brain Tissue Lysate
2B'IP product: IP dilute 1:200
Western blot analysis: primary antibody : #38092 1:10,000
Secondary antibody: Goat anti-Mouse IgG, Light chain specific, 1:5,000

Background

Tubulin is the major constituent of microtubules. It exists as a heterodimer consisting of an alpha and a beta subunit. Class II beta tubulin is the major form of tubulin beta in neurons, although it is not neuronal specific. It is found in many other tissues including lung tissue and Schwann cells.

Note: This product is for in vitro research use only and is not intended for use in humans or animals.