

Plant actin Mouse Monoclonal Antibody

Catalog No: #38088

Orders: order@signalwayantibody.comSupport: tech@signalwayantibody.com

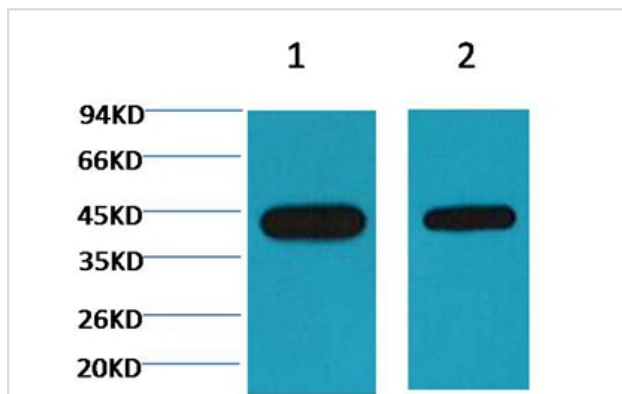
Description

Product Name	Plant actin Mouse Monoclonal Antibody
Host Species	Mouse
Clonality	Monoclonal
Purification	Affinity purification using immunogen.
Applications	WB
Species Reactivity	Various Plants
Specificity	Antibody detects endogenous various plants actin protein.
Target Name	Plant actin
SDS-PAGE MW	45kd
Concentration	1.0mg/ml
Formulation	Mouse IgG1 in phosphate buffered saline (without Mg ²⁺ and Ca ²⁺), pH 7.4, 150mM NaCl, 0.02% sodium azide and 50% glycerol.
Storage	Store at -20°C

Application Details

Western blotting: 1:3000~1:5000

Images



Western blot analysis of Arabidopsis, using #38088 diluted at
1) 1:5,000 2) 1:10,000.

Background

Actin is a highly conserved protein and an essential component of cell cytoskeleton and plays an important role in cytoplasmic streaming, cell shape determination, cell division, organelle movement and extension growth. Preferentially expressed in young and expanding tissues, floral organ primordia, developing seeds and emerging inflorescence. Antibodies against plant Actin are useful as loading controls for Western Blotting.

Note: This product is for in vitro research use only and is not intended for use in humans or animals.