

# Rubisco Mouse Polyclonal Antibody(Large Chain)

Catalog No: #38084

Orders: [order@signalwayantibody.com](mailto:order@signalwayantibody.com)Support: [tech@signalwayantibody.com](mailto:tech@signalwayantibody.com)

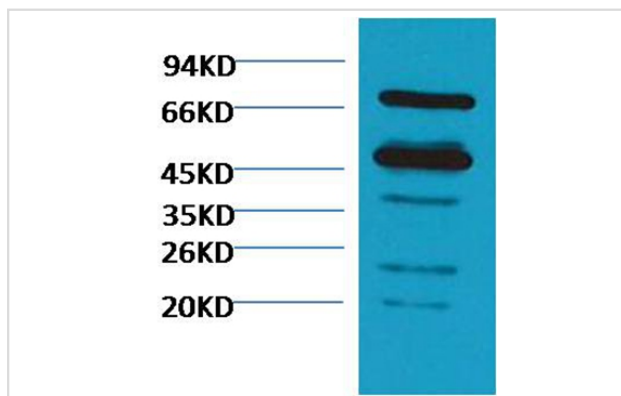
## Description

Product Name	Rubisco Mouse Polyclonal Antibody(Large Chain)
Host Species	Mouse
Clonality	Polyclonal
Purification	Affinity purification using immunogen.
Applications	WB
Species Reactivity	Various Plants
Specificity	The Rubisco Mouse Polyclonal Antibody detects endogenous Rubisco Large Chain protein.
Target Name	Rubisco
Other Names	Ribulose biphosphate carboxylase oxygenase
SDS-PAGE MW	53kd
Concentration	1.0mg/ml
Formulation	Mouse IgG1 in phosphate buffered saline (without Mg <sup>2+</sup> and Ca <sup>2+</sup> ), pH 7.4, 150mM NaCl, 0.02% sodium azide and 50% glycerol.
Storage	Store at -20°C

## Application Details

Western blotting: 1:3000~1:5000

## Images



Western blot analysis of *Arabidopsis thaliana*, using #38084 diluted at 1:5,000.

## Background

Ribulose-1,5-bisphosphate carboxylase oxygenase, commonly known by the abbreviation RuBisCO, is an enzyme involved in the first major step of carbon fixation, a process by which atmospheric carbon dioxide is converted by plants to energy-rich molecules such as glucose.

Note: This product is for in vitro research use only and is not intended for use in humans or animals.