

mStrawberry Mouse Polyclonal Antibody

Catalog No: #38082

Orders: order@signalwayantibody.comSupport: tech@signalwayantibody.com

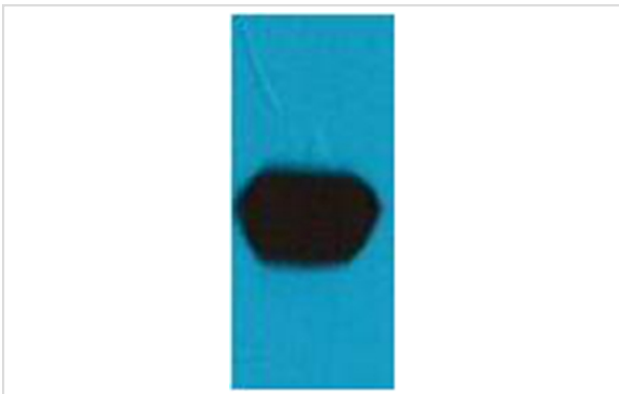
Description

Product Name	mStrawberry Mouse Polyclonal Antibody
Host Species	Mouse
Clonality	Polyclonal
Purification	Affinity purification using immunogen.
Applications	WB IHC IF IP
Species Reactivity	N/A
Specificity	The mStrawberry Mouse Polyclonal Antibody detects mStrawberry & mStrawberry Tag protein.
Target Name	mStrawberry
Other Names	mStrawberry
Concentration	1.0mg/ml
Formulation	Mouse IgG1 in phosphate buffered saline (without Mg ²⁺ and Ca ²⁺), pH 7.4, 150mM NaCl, 0.02% sodium azide and 50% glycerol.
Storage	Store at -20°C

Application Details

Western blotting: 1:2000~1:5000

Images



Western blot analysis of mStrawberry recombinant protein, using #38082 diluted at 1:5,000.

Background

mStrawberry is a bright, monomeric red fluorescent protein which was developed in Dr. Roger Tsien's lab by directed mutagenesis of mRFP.

Note: This product is for in vitro research use only and is not intended for use in humans or animals.