

# β-actin Mouse Monoclonal Antibody

Catalog No: #38074

Orders: [order@signalwayantibody.com](mailto:order@signalwayantibody.com)Support: [tech@signalwayantibody.com](mailto:tech@signalwayantibody.com)

## Description

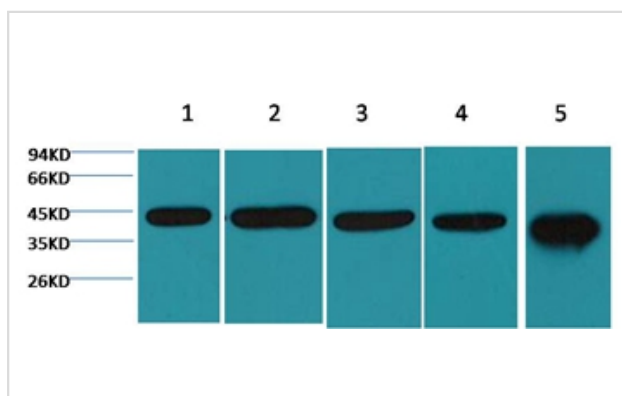
|                    |  |
|--------------------|--|
| Product Name       | β-actin Mouse Monoclonal Antibody  |
| Host Species       | Mouse  |
| Clonality          | Monoclonal   |
| Clone No.          | 5B7  |
| Purification       | Affinity purification using immunogen.   |
| Applications       | WB IHC IF  |
| Species Reactivity | Hu Rt Ms Mk Dg Chk Hm Rb Pg Sh   |
| Specificity        | Antibody detects endogenous β-actin protein.   |
| Target Name        | β-actin  |
| Other Names        | ACTB; BRWS1; PS1TP5BP1   |
| Accession No.      | Swiss-Prot#:P60709   |
| SDS-PAGE MW        | 45kd   |
| Concentration      | 1.0mg/ml   |
| Formulation        | Mouse IgG1 in phosphate buffered saline (without Mg <sup>2+</sup> and Ca <sup>2+</sup> ), pH 7.4, 150mM NaCl, 0.02% sodium azide and 50% glycerol. |
| Storage            | Store at -20°C   |

## Application Details

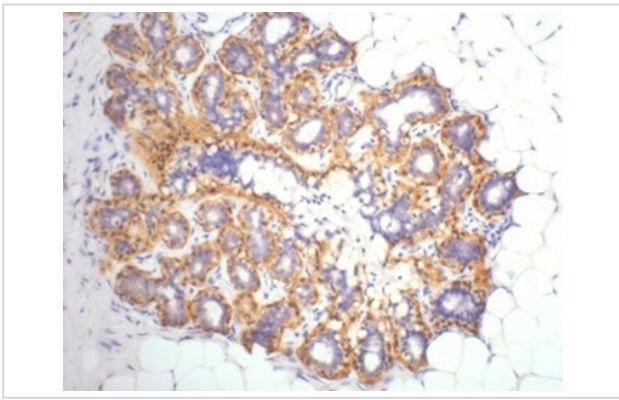
Western blotting: 1:5000~1:10000

Immunohistochemistry: 1:200

## Images



Western blot analysis of 1) 293T, 2) Mouse Kidney tissue, 3) HeLa, 4) Rat Heart tissue, 5) Rat Brain tissue, using #38074 diluted at 1:5,000.



IHC staining of Human ovary tissue with  $\beta$ -Actin mouse mAb(5B7) diluted at 1:200.

## Background

$\beta$ -actin is one of six different actin isoforms that have been identified. The actin molecules found in cells of various species and tissues tend to be very similar in their immunological and physical properties. Therefore, antibodies against  $\beta$ -actin are useful as loading controls for Western Blotting. However it should be noted that levels of  $\beta$ -actin may not be stable in certain cells. For example, expression of  $\beta$ -actin in adipose tissue is very low and therefore  $\beta$ -actin should not be used as loading control for these tissues.

Note: This product is for in vitro research use only and is not intended for use in humans or animals.